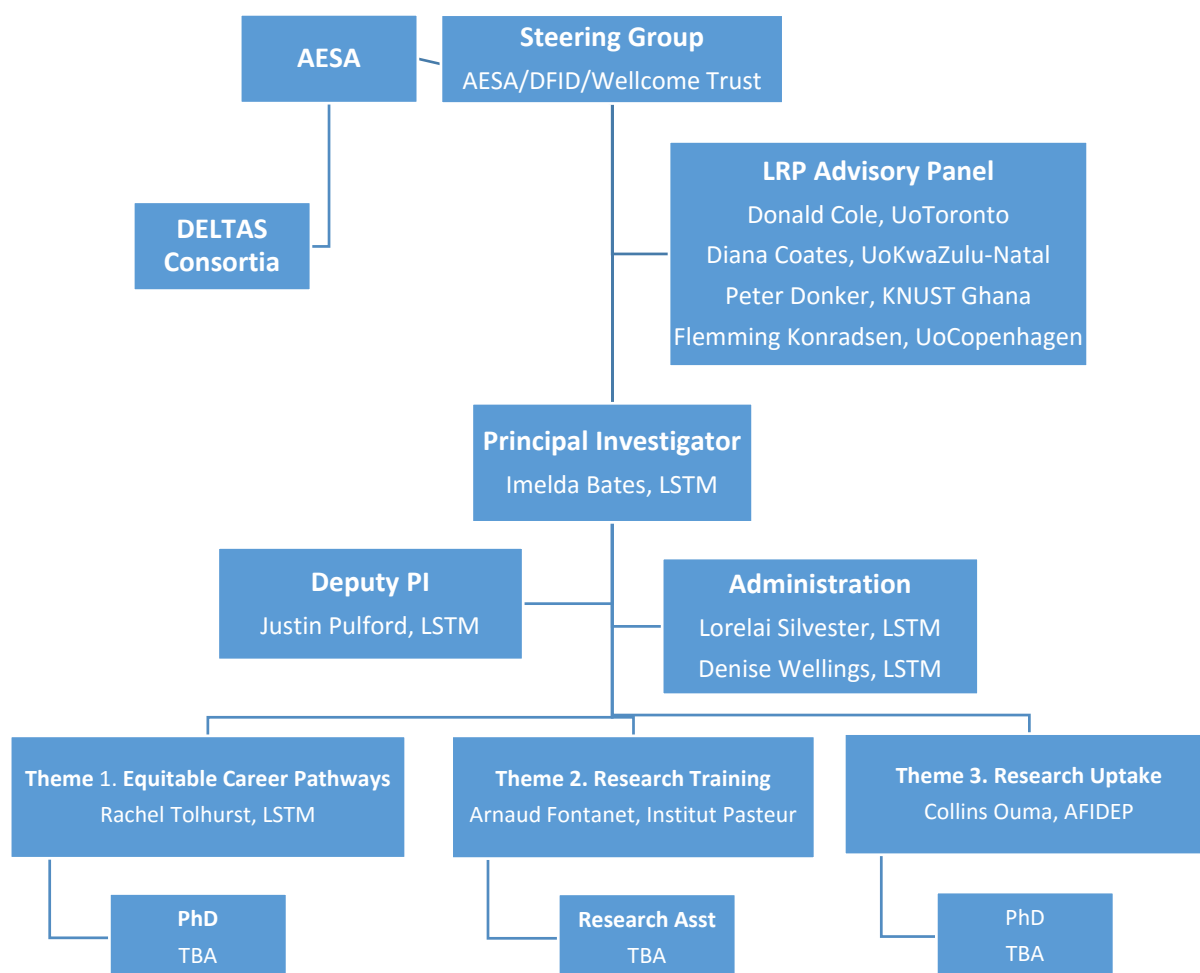


Welcome

The DELTAS Learning Research Programme (LRP) officially commenced on February 1st, 2016. All of us here at the Capacity Research Unit (CRU), Liverpool School of Tropical Medicine (LSTM), are incredibly excited to be starting this programme and we look forward to working with you all over the next few years. Successful completion of the LRP will require inputs from all of us at various times over the course of the programme and regular communication will be central to facilitating this. One means by which we will maintain communication and ensure all parties are regularly updated is by a quarterly LRP newsletter. In this, the first of our quarterly newsletters, we provide an updated LRP organogram and timeline and highlight priority activities for the next three months.

LRP Organogram



As indicated in the organogram, a wide range of individuals and organisations will contribute to the LRP in one form or another. The LRP ‘Implementation Team’ will be led by Prof. Imelda Bates (project PI) and will consist of a deputy PI, administrative support, research theme leaders, a research assistant and two PhD students. In addition, a specialist advisory panel will provide independent review as required. The LRP implementation team will report directly to a steering group consisting of representatives from the Alliance for Accelerating Excellence in Science in Africa (AESAs), the

Department for International Development (DFID) and the Wellcome Trust. Whilst a member of the LRP steering group, AESA are also indicated separately in the organogram. This is in recognition of the fact that a close working relationship with AESA will be essential for engaging the DELTAS consortia, for successful program completion and, ultimately, consideration of LRP recommendations for influencing practice and policy.

LRP Timeline

The LRP spans a four and a half year period between February 2016 and July 2020. The programme commences with a six-month inception phase scheduled to conclude July 31st 2016.

Activities and deliverables	Inception Feb-Jul 16	Year 1	Year 2	Year 3	Year 4
Inception phase report	02-07/16				
PhD students and research assistant commence					
Ethical approvals					
Annual progress/financial/findings/summary report for each theme					
Publications: theme literature reviews and methodologies and (Y1/2/3); learning outputs (Y3/4)					
In-depth reports of emerging findings by theme					
Dissemination workshops (funding dependent)					
Final report/publication/brief and presentation for theme 2					
Final report/publication/brief and presentation for themes 1 and 3					

Each year in the timeline runs from August to July (e.g. year 1 = Aug 2016-July 2017).

Priority Activities, Feb-Apr 2016

- Define roles and responsibilities of the LRP implementation team members.
- Finalise Terms of Reference for the LRP Advisory Panel members.
- Finalise Memorandum of Understanding (or equivalent) between LSTM and AESA, LSTM and AFIDEP and LSTM and Institut Pasteur.
- Clarify details of the steering group’s expectations from the LRP.
- Draft adverts for PhD studentships and research assistant.
- Draft detailed arrangements for PhD supervision.
- Organise PhD student and research assistant recruitment processes, including interview panel and selection criteria.

The Deputy PI will initiate all of the aforementioned activities, although inputs will be sought from respective individuals/organisations as required.

We look forward to working with you over the coming years and we wish you all the very best for 2016.

Justin Pulford, Deputy PI, DELTAS LRP
justin.pulford@lstmed.ac.uk

CRU, LSTM.

