



# LIVERPOOL SCHOOL OF TROPICAL MEDICINE

Since 1898

## JOIN THE INNOVATORS

From developing drugs  
to influencing change

P.04

## LEAD THE WAY

LSTM is at the  
forefront of research

P.06

## MAKE AN IMPACT

LSTM's response to the  
COVID-19 pandemic

P.08

# PROSPECTUS 2021/22



Welcome to the Liverpool School of Tropical Medicine, and thank you for your interest in studying on one of our programmes.



Ever since it was founded in 1898, LSTM has been at the forefront of providing our stakeholders with the scientific evidence to translate relevant science into policy and practice. We do that by working collaboratively in over 70 countries to fulfil our mission of improving the health of the world's poorest people.

Our multidisciplinary approach to global health research allows us to translate research innovation and scientific breakthroughs from laboratory research into effective interventions for those most in need. It is testament to our ongoing success that LSTM continues to expand.

As one of the few postgraduate centres of excellence in the field of tropical medicine, we are enthusiastic about offering our unrivalled learning opportunities to students within the UK and across the developing world. We provide all of our students with the opportunity to excel in their careers in public health, medicine, and academia.

The Education Department at the Liverpool School of Tropical Medicine (LSTM), together with students, is starting a process of facilitating

actions to 'decolonise' our curriculum and practices. Decolonising the curriculum is central to LSTM Educational Strategy, which is focused on equity and inclusion. This process will involve a series of virtual conversations, events and seminars which will help inform our understanding and practices as we aim to answer several important questions such as 'what would a decolonised curriculum and practices look like at LSTM, given our global health history?'

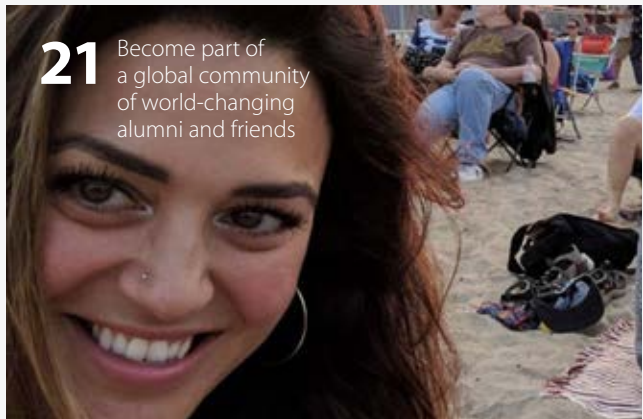
Decolonising the curriculum is a long and complex process. As part of this journey we will be reviewing the images used in all our publications, including our prospectus. Changes will be made in the coming months to reflect these changes, based on feedback and expertise from staff and students.

I do hope that you will enjoy finding out more about who we are. The work we do helps to save countless lives, and I invite you to contact us directly if you would like more information ➤.

**Professor Phil Padfield**  
Dean of Education

# CONTENTS

- 02 – Director's Welcome
- 04 – Join the Innovators
- 06 – Lead the Way
- 08 – Make an Impact
- 12 – Our History
- 14 – Why Study in Liverpool?
- 16 – Facilities
- 17 – Student Experience
- 20 – Fundraising
- 21 – Alumni
- 22 – Finance & Funding
- 23 – Open Days
- 24 – Courses & Programmes
- 26 – Master's at LSTM
- 27 – Clinical Science MSc Programmes
- 30 – Humanitarian MSc Programmes
- 33 – MSc Humanitarian Practice (LEAP programme)
- 36 – Global Health Programmes
- 39 – Tropical Disease Biology MSc Programme
- 41 – Public Health MSc Programmes
- 46 – Professional Diplomas
- 47 – Professional Diploma Programmes
- 54 – Clinical Short Courses
- 60 – Online Courses
- 70 – Postgraduate Research Degrees (PGR)
- 72 – MRC Case / DTP Studentships
- 72 – How to Apply



**21** Become part of a global community of world-changing alumni and friends

Liverpool School of Tropical Medicine,  
Pembroke Place, Liverpool, UK L3 5QA  
info@lstmed.ac.uk +44 (0) 151 702 9590

Company registration No: 83405  
VAT registration No: 887125885  
Registered charity No: 222655



**06** At the forefront of groundbreaking research work



**12** The proud and rich history of the world's first institution of its kind

**26** Master's programmes attracting highly-motivated graduates from around the world



Find out more about our work and impact  
[lstmed.ac.uk](http://lstmed.ac.uk)

Cover photo: by Professor Stephen Torr, LSTM. Scientists from LSTM and Tanzania's Vector and Vector Borne-Diseases Research Institute conducting a survey of tsetse in the Tarangire National Park. The research will lead to sustainable strategies to protect people and livestock from sleeping sickness and nagana, diseases caused by trypanosomes transmitted by tsetse flies.



# 2030



## JOIN THE INNOVATORS

LSTM is proud to be a part of a new decade long campaign funded by the Bill & Melinda Gates Foundation which highlights the research being carried out in the UK which benefits the health of people globally.

The campaign launched in October 2020 with a six-week media campaign showcasing the UK's ground-breaking work in science and innovation to solve some of the world's greatest health challenges.

We are thrilled the campaign features three LSTM led projects part of the '10 Things the UK is doing to make the world healthier', such as tackling

TB with drones in Nepal, our snakebite research, and Tiny Targets, an innovative programme to strengthen national tsetse fly control programmes.

The campaign also features two LSTM researchers as part of the "10 people in the UK who are changing the face of health", Dr Emily Adams and Professor Daniela Ferreira.



## CHANGING THE FACE OF HEALTH:

### DR EMILY ADAMS

Emily Adams is Senior Lecturer in Diagnostics for Infectious Disease and Diagnostics Lead for LSTM's Research Centre for Drugs and Diagnostics. Emily's research ranges from point-of-care diagnostics such as rapid-diagnostic-tests (RDTs) to simplified molecular diagnostics that can be used at the community level.

Emily's team has been at the forefront of the development and validation of rapid diagnostic tests for COVID-19, including a partnership with Mologic on an antibody test which was developed for manufacture in the UK and in Dakar, Senegal.

This work was critical in accelerating testing solutions for low- resource settings where diagnostic testing capacity is extremely low, but where rapid testing is essential in helping to contain transmission. Her work has also included understanding modes and of COVID-19 transmission in various settings. Emily is also part of a team leading a study measuring transmission and the impact of COVID-19 on households in Liverpool.

## NOVEL SNAKEBITE TREATMENT

LSTM's Centre for Snakebite Research and Interventions (CSRI) has shown that the repurposing of an existing medicine, commonly used to treat mercury poisoning, is effective in treating some snakebites.

Snakebites kill up to 138 000 victims every year, and around 400 000 survivors are left with permanent physical disabilities or disfigurements.

Those most affected live in some of the world's poorest communities in sub-Saharan Africa, Asia and Latin America and often rely on agricultural activities for their income. This research has the potential to save lives and limbs by removing treatment delays.



### DID YOU KNOW?

CSRI hosts the largest and most diverse collection of tropical venomous snakes in the UK to support its diverse research activities, education, and public engagement work.

## DRONES TRIALLED TO FIGHT TB IN NEPAL



LSTM and partners are trialling the use of drones to combat tuberculosis in some of Nepal's most rural and inaccessible areas.

TB is the world's biggest infectious disease killer and there are more than 40,000 new cases in Nepal every year. Early and correct treatment is reliant on good diagnostic testing and the drones are being used to greatly reduce the transportation time of samples for testing.

This work will make the job of volunteers easier and allow patients in remote areas to access better and more convenient care, **'leaving no-one behind'**.

## OUTSMARTING BIG DISEASES, ONE TINY TARGET AT A TIME

LSTM led the development of an innovative but extremely simple solution to reduce the risk of Trypanosomiasis, also known as Sleeping Sickness using 'tiny targets' to kill the disease-carrying Tsetse fly. The traps use bright blue insecticide-treated fabric not much bigger than a handkerchief, mounted on a stick next to a river where the flies live. The fabric attracts the tsetse flies and they are killed by the insecticide, which reduces the population to such an extent that the number of cases drops dramatically.



### DID YOU KNOW?

LSTM is home to the largest Tsetse breeding colony in the UK.

## PROFESSOR DANIELA FERREIRA

Daniela is Head of the Clinical Sciences Department and Professor of Respiratory Vaccines and Infection Immunology.

The team's work focuses on pneumococcal bacteria and the development of new vaccine strategies. The Experimental Human Pneumococcal Challenge (EHPC) Model is the only model

in the world in which participants are inoculated with live pneumococcal bacteria in their nose. This model is used as a vaccine testing platform as well as a transmission model for prevention strategies with multiple flourishing life science partnerships. This work is critical as pneumonia kills more children globally than any other infectious disease.

Daniela's work has involved the development and trialling of a number of COVID-19 vaccine candidates, including the FASTER study in partnership with Pfizer, which aims to understand how bacterial pneumonia leads to severe COVID-19 infections. Daniela is also leading the LSTM-arm of the phase III Oxford vaccine trials.





# MASSIVE BOOST

TO LIFE SCIENCES  
RESEARCH IN LIVERPOOL

Elevating the Liverpool City region and the north west of England at the forefront of global research and development.

LEAD THE WAY

## "LSTM HAS ALWAYS BEEN AT THE FOREFRONT OF INNOVATIVE APPROACHES TO FINDING SOLUTIONS."

Recognising the Liverpool City Region and North West England's existing world-class expertise in life sciences, a Liverpool School of Tropical Medicine (LSTM) led consortium has received £18.6m from UK Research and Innovation (UKRI) Strength in Places Fund (SIPF) for five years to deliver an innovative project delivering integrated therapeutic solutions for human infections.

The newly formed consortium named iiCON, along with LSTM, includes the Liverpool University Hospitals NHS Foundation Trust, Unilever UK, University of Liverpool, and Evotec Ltd and the AMR Centre, which are based at Alderley Park, Cheshire.

The project will act as a catalyst for economic and regional productivity by leveraging £115 million worth of investment, creating eight specialist, commercially sustainable research platforms for infectious diseases therapeutics in North West England. These research platforms will go on to transform the efficiency of new product discovery, development, evaluation, and impact assessment.

With the Liverpool City Region, Cheshire and Warrington having the largest concentration of infectious diseases research in the UK, it is no surprise that this consortium of organisations was chosen for the SIPF funding. The region has shown an impressive, meticulous response to the COVID-19 outbreak, working on active research programmes in vaccines, diagnostics, and therapeutics.

Project lead, LSTM's Professor Janet Hemingway, said: "LSTM devised this programme together with our industrial, NHS and academic partners aiming to be the first choice globally for infection research and development initiatives. This grant secures the international reputation of the region in infection innovation and will attract substantive follow-on international investment."

LSTM Director, Professor David Laloo said:

"Throughout its history, LSTM has always been at the forefront in innovative approaches in finding solutions for human infections. The current global COVID-19 outbreak shows again how essential and relevant our global expertise in the diagnosis, treatment and prevention of these diseases is."

LSTM, with industry funding, is currently carrying out two trials – one focusing on immunology in bloods, nasal mucosa and bacterial colonisation associated with clinical outcomes. The other takes samples from healthcare workers and COVID-19 patients to assess changes in biomarkers during exposure to/development of infection.

Investment in diagnostic technologies at LSTM, initiated in response to the antimicrobial resistance (AMR) crisis, have been rapidly adapted to provide validated diagnostics to meet the needs of the COVID-19 outbreak. It has allowed Liverpool to become a test bed for new diagnostic technology development and evaluation trials for COVID-19. To this end LSTM has been central to the validation of lab based COVID-19 anti-body tests and rapid diagnostic tests with multiple commercial and academic partners.



Want to learn more? We have lots of impact stories on our website [lstmed.ac.uk/news-events/make-an-impact](https://www.lstmed.ac.uk/news-events/make-an-impact)



# LSTM'S RESPONSE TO THE COVID-19 PANDEMIC

**LSTM is playing a unique role in the response to COVID-19, covering all of the translational research cycle. From the beginning of the outbreak, we have partnered with industry, academic institutions and organisations aimed to have the best possible impact on public health in the UK and overseas.**

A lot of LSTM's research is conducted via its Centre for Drugs and Diagnostics (CDD). This Centre comprises an experienced multi-disciplinary group of experts working together researching, developing and validating drugs and diagnostics in response to the COVID-19 pandemic.

Research into vaccines is the only way to find out which vaccines will work. LSTM plays a key role in the various COVID-19 vaccine research programmes that are ongoing, most notably establishing LSTM as a Phase III trial site for the Oxford Vaccine Trial.

LSTM also partners with multiple other institutions and organisations to provide evidence based advisory services to government departments and other interested parties.

MAKE AN IMPACT



## COVID-19 Oxford vaccine trial

The development of a safe and effective vaccine will be the only way we will be able to get out of the pandemic and resume our normal lives and the Respiratory Infection and Vaccine team at LSTM is working hard towards this.

LSTM is one of the research trial sites testing a new vaccine against COVID-19 in healthy volunteers. This study will enable researchers to assess if people can be protected from COVID-19 with this new vaccine called ChAdOx1 nCoV-19. It will also give them valuable information on safety aspects of the vaccine and its ability to generate good immune responses against the virus in young and older adults. LSTM does this by randomly allocating participants to receive the ChAdOx1 nCoV-19 vaccine or a Men ACWY vaccine in addition to doing blood tests and collecting information about any symptoms that occur after vaccination. If a participant develops COVID symptoms they are tested for COVID. To estimate the efficacy of the vaccine the proportion of those who develop COVID in the vaccine and the control arm will be compared. Efficacy data for the trial will be pulled from all 18 sites in the UK and Brazil and presented to regulators for potential licensure of the vaccine. The team is now in discussions with NIHR and industry partners for delivery of two further COVID vaccine studies starting at the end of the year. In addition, Professor Daniela Ferreira's team has been collaborating with Pfizer, who have an existing vaccine which works against one cause of severe pneumonia and are working on a vaccine for COVID. Viral infections are commonly associated with secondary bacterial infections during winter season, with pneumococcus increasing viral disease severity. Professor Daniela Ferreira and Dr Elena Mitsi were awarded a Pfizer funded grant to investigate the relationship of pneumococcus and SARS-CoV-2 and assess the immunological responses during co-infection. The ultimate aim is to define if pneumococcal vaccine would ultimately also assist the fight against COVID.



## Printing Face Shields for the NHS

LSTM is playing a unique role in the response to COVID-19, covering all of the translational research cycle. From the beginning of the outbreak it has partnered with industry, academic institutions and organisations aimed to have the best possible impact on public health in the UK and overseas.

A lot of LSTM's research is conducted via its Centre for Drugs and Diagnostics (CDD). This Centre comprises an experienced multi-disciplinary group of experts working together researching, developing and validating drugs and diagnostics in response to the COVID-19 pandemic.

Research into vaccines is the only way to find out which vaccines will work. LSTM plays a key role in the various COVID-19 vaccine research programmes that are ongoing, most notably establishing LSTM as a Phase III trial site for the Oxford Vaccine Trial.

LSTM's PhD student Sean Tomlinson re-allocated LSTM's 3D printers and used them to print free face shields for NHS staff working on the frontline during the

COVID-19 pandemic. Sean Tomlinson answered the call from DoES Liverpool, a community interest company focused on supporting the local maker community, to produce effective low-cost face shields for North West healthcare workers.

The laser-cut polypropylene face shields produced by DoES Liverpool and the larger network of volunteers have been ordered by hospitals and GP surgeries across the North West including Aintree, Liverpool Royal, Walton, East Lancashire Hospitals and Manchester Royal Infirmary. Sean Tomlinson, who joined the MRC Doctoral Training Partnership scheme with LSTM, had access to LSTM's 3D printers and is using the designs provided by DoES Liverpool to optimise the printing process to increase daily production 80 face shields per day using 4 printers. Establishment of a COVID-19 Preclinical Pipeline for Therapeutics



Want to learn more? We have lots of impact stories on our website [lstm.ac.uk/news-events/make-an-impact](https://lstm.ac.uk/news-events/make-an-impact)



COVID Diagnostics

The COVID diagnostics programme at CDD is enrolling patients suspected of COVID-19 for diagnostic evaluation and Dr Emily Adams's team has become the UK evaluation site for FIND, a programme which runs multiple rapid diagnostics for antigen detection, to rapidly identify active infection. The programme works in partnership with industry that has developed a new rapid test to detect the presence of Coronavirus (COVID-19). Currently, the NHS uses the best test available to detect the virus using a nasal swab. The current test can take up to 4 days before the results are available which can lead to an extended amount of time in quarantine or a prolonged amount of time grouped with other patients that are suspected to have Coronavirus increasing the potential for hospital transmission.

The new tests need to be validated against the current best practice. The programme needs to use the tests with real samples to check if they are as accurate as the current test. If successful, this study may change practice and policy allowing for early detection and appropriate isolation of patients. Evaluation of rapid diagnostic tests for active infection LSTM is working with FIND, a global non-profit organization driving innovation in the development and delivery of diagnostics to combat major diseases affecting the world's poorest populations, and other industrial partners to assess the sensitivity and specificity of new point-of-care antigen tests. The CDD team are working in a multi-centre study with FIND, Germany and Brazil to assess multiple tests, and data is presented by FIND to the World Health Organization (WHO) to make decisions on large-scale procurement. These tests have the power to accurately identify active infection in minutes at the bedside of the patient. CDD is now investigating ways to implement these findings in the UK and further afield working with the MALCOV team for rapid screening of infection in Burkina Faso and Kenya. The CDD team are working with multiple industrial partners, most notably Mologic, funded by Wellcome and DFID (now FCDO), to improve antigen tests by rapid analytical sensitivity and specificity testing to improve prototypes, and rapidly use clinical samples for clinical evaluation.

Well Travelled Clinics and COVID-19

Since the early days of the pandemic, staff at LSTM's Well Travelled Clinics (WTC) have played a significant role in supporting LSTM and local NHS and PHE health care teams in their response to COVID-19.

The WTC Liverpool branch remained open throughout the pandemic, continuing to offer a vaccination and occupational travel service to ensure that key workers and international staff could continue to be deployed. WTC's highly experienced staff were utilised for a number of COVID-19 specific roles. This included two Occupational Health nurses to the Liverpool University Hospital Foundation Trust (LUHFT) to get those returning to the NHS as part of the pandemic response into their roles as quickly as possible. More recently, three members of nursing staff have been temporarily seconded to Public Health England to help support the COVID-advisory service, which has been overwhelmed with the volume of enquiries from local councils, schools, colleges, universities, nursing homes as well as companies regarding COVID-19.

In partnership with the Accelerator Research Clinic (ARC) team, administrative, nursing, medical and management staff have been involved in supporting the Oxford COVID-19 vaccine trial. Over the last five months, the WTC team vaccinated over 850 participants for this trial.

With further vaccine trials in the pipeline, WTC is in discussion with the ARC and CRN to provide their experience and expertise in vaccination to provide continued support for these.

WTC nursing staff have also supported other local COVID research studies through the secondment of nursing staff. This included the SAFER and FASTER research trials at LUHFT, being run by the ARC research team, and the University of Liverpool's COV-LIV community study. WTC's education staff have also been involved in vaccine training and education to support the Northwest Coast Clinical Research Network (CRN), by delivering a bespoke training course to a group of CRN nurses so they can take part in vaccine trials, this is to ensure that we have enough qualified nurses with experience in vaccination for future clinical trials. Most recently the WTC started offering a new back-up COVID-19 testing service for symptomatic LSTM staff and students who are unable to access NHS rapid testing because of the current pressure on the service. A special testing tent has been set up at the back of WTC and protocols have been put in place to manage the process. The WTC's commercial agility and flexibility, together with the previous experience in managing the healthcare needs of rapid humanitarian deployments, have proved invaluable in delivering a swift and targeted response to the pandemic.





# 1898 — 2020



**1898** A donation from Sir Alfred Lewis Jones, Head of the Elder Dempster Shipping Line, supports the creation of the world's first research and education institution dedicated to tropical medicine – the Liverpool School of Tropical Medicine, initially based within the facilities of the Royal Southern Hospital on Liverpool's waterfront and the University of Liverpool.

**This was in response to the number of sailors returning to the Port of Liverpool with diseases such as malaria, dysentery, beri-beri and tropical anaemia. The shipowners recognised the serious threat these diseases posed and took action through the founding of LSTM.**

**1899** LSTM appoints Ronald Ross (front row, second from left) as its first lecturer, and the first scientific expedition was undertaken to Sierra Leone, where scientists studied malaria.

**1902** Ronald Ross becomes the first British recipient of the Nobel Prize for his work in describing the transmission of malaria by mosquitoes.

**1909** Alfred Lewis Jones dies and leaves a large bequest to LSTM. Thanks to his and other donations, LSTM was able to set up its own laboratory and teaching premises in Pembroke Place, separate from the University of Liverpool.

**L**STM's inaugural graduation ceremonies mark a significant achievement, and the story of this journey conveys a fascinating, proud and rich history of the world's first institution of its kind.



**1914** The building of these laboratory facilities was completed, but due to the advent of the war, occupation was deferred. Instead, they were used as a Tropical Diseases Hospital and offered courses to officers of the Royal Army Medical Corps.

**1920** Teaching resumed, and LSTM finally moves into its own building.

**1921** LSTM opens an overseas research laboratory in Freetown, Sierra Leone. This laboratory functioned continuously until the early stages of World War II and made many important discoveries in West Africa, including demonstrating that a species of black fly was responsible for the transmission of filarial worms to humans, causing river blindness.

Also in 1921, Dr Alwen M. Evans is appointed as LSTM's first female lecturer.



**1945** After World War II, many former Far East Prisoners of War (FEPOWs) are sent to LSTM on their repatriation to the UK. In addition to treating them for tropical diseases, LSTM's clinicians were the first to describe 'FEPOW Syndrome' (post-traumatic stress disorder), the first time the psychological effects of conflict had been studied. This work has influenced how these conditions are treated today.

**1946** The appointment of LSTM's longest-serving Dean, Brian Maegraith, marked a broadening of the LSTM's size and curriculum. Maegraith famously declared 'Our impact on the tropics should be in the tropics!', which resulted in LSTM forging links with other research institutions across the globe, including the creation of the Faculty of Tropical Medicine at Bangkok.

**1973** The Alastair Reed Venom Unit is established, developing new anti-venoms for the treatment of snakebite.

**1991** Building upon long-standing relationships with Malawi's Ministries of Health and Education, LSTM is invited to develop the College of Medicine in Blantyre (CoM). Despite opposition from critics claiming a



medical school was a luxury Malawi couldn't afford, LSTM helps to sway the argument demonstrating that CoM was essential to the future health and economic development of the country. Upon the establishment of CoM, LSTM placed senior personnel in leadership roles to develop the curriculum and initially run the operation, with the aim of developing Malawian leadership for the future. Since then, CoM has grown from an annual intake of 10–15 students with a handful of faculty, to 80+ students every year and 110 staff.

**1995** The Malawi–Liverpool–Wellcome Centre in Blantyre is established, a partnership between LSTM, the University of Liverpool and the Wellcome Trust (the primary funder). MLW is currently home to more than 680 staff, and conducts internationally-excellent science which aims to improve the health of people in sub-Saharan Africa and train the next generation of health leaders in Malawi.

**2000** Janet Hemingway takes over as Director and, over an 18-year tenure, leads LSTM through a period of significant investment and expansion – including increasing the research portfolio from £23m to more than £500m.

**2004** LSTM celebrates 100 years of the Diploma in Tropical Medicine and Hygiene (DTM&H) programme.

**2013** LSTM receives higher education status.

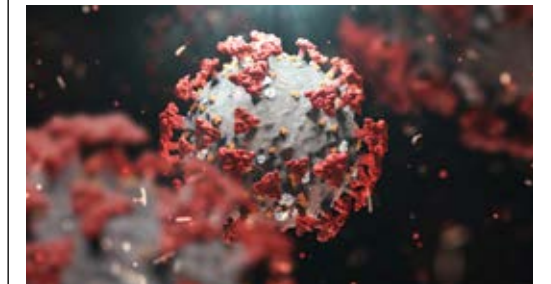
**2016** Bill Gates visits LSTM with then UK Chancellor George Osborne to announce the £1bn Ross Fund to combat diseases in developing countries.



**2017** Privy Council awards LSTM degree-awarding powers.

**2018** LSTM holds its first graduation ceremonies at the Liver Building, and awards Dr Letitia Obeng and Professor Victor Mwapasa its first honorary degrees.

**2019** Professor David Laloo takes over as Director of LSTM, leading the organisation towards its 125th anniversary in 2023.



**2020** - COVID-19 Response. We have played a leading role in the UK response to COVID-19 and community interventions here and overseas. Our researchers have been at the forefront of the development and validation of rapid diagnostic tests for COVID-19. In partnership with Pfizer, we tested a potential vaccine for COVID-19-related pneumonia. LSTM was selected as one of the UK sites for Phase III of the University of Oxford's COVID-19 vaccine clinical trial, the biggest phase III trial site outside Oxford, recruiting 900 participants. ▶



Find out more about our history  
[lstm.ac.uk](http://lstm.ac.uk)



Liverpool is a fantastic student city, bursting with opportunities and lots of things to do. It has a legendary music scene that's bigger than just the Beatles, and a city centre packed with clubs, pubs, bars, restaurants, and cafés.

## A CITY LIKE NO OTHER



### Central destination

Liverpool is only 2 hours from London by train. Liverpool's John Lennon airport connects to more than 650 destinations worldwide.



### Friendliest city

Liverpool is one of the most affordable and safest cities in the UK. It has been voted the friendliest city in the UK\* & 4th friendliest city in the world.\*\*

\*YouGov poll, December 2015  
\*\* Rough Guides, 2015



### Amazing shopping

Liverpool One is the city's £1 billion award-winning shopping development that attracts 2 million visitors every month.



### World class culture

Liverpool has World Heritage site status for the City Skyline – the same status as the Pyramids and the Taj Mahal!



## Great reasons to choose Liverpool

LSTM is based in the culturally rich city of Liverpool, offering students a great opportunity to visit an impressive number of galleries and museums in addition to exploring the legendary music scene. The city-centre restaurant scene will allow you to explore the cuisine of any culture, while the city also has award-winning shopping facilities and theatres, two Premier League football clubs, golf courses, beautiful parks, and outstanding countryside within a few miles drive.

As a multi-racial and multicultural city with a diverse range of religions and communities, Liverpool is a city that is very supportive of all the students who choose to live, work, and study here. ▶





# FACILITIES

LSTM has well-equipped, modern teaching and research facilities, in keeping with an institution at the cutting edge of tropical medicine. Major refurbishment of the main teaching areas began in 2015, including a major overhaul of the library facilities and all audio-visual equipment, as well as the creation of new collaborative group spaces and more flexible teaching rooms.

Teaching methods and programme content are continuously evaluated at LSTM. We place particular importance on small-group teaching, which allows the independent learning experience to come to the fore in the class. It also helps students build communication skills through group presentations, contributions in class and other assignments.

## The Weston Active Learning Lab

LSTM has invested approximately £1 million to create a new active learning laboratory, with support of donations from Garfield Weston Foundation, the Dinwoodie Charitable Company and the generosity of individual donors. This cutting-edge, multifunctional learning environment offers students a unique teaching and collaborative experience, contributing to LSTM's aim of being the 'go-to' institution for the training of global health professionals and leaders of the future.



## Virtual Learning Environment

Brightspace is LSTM's Virtual Learning Environment. Providing support at both course and programme level, it is at the core of the learning experience for our students.

### Brightspace provides access to:

- learning content and associated activities
- tools for communication and collaboration
- assessments, both formative and summative
- an area for personal reflection

In addition to the tools which are part of the Brightspace suite, a number of other technologies have also been integrated into Brightspace using single sign-on. This ensures that students have access to all their information and tools using a single username and password. ➤

*"The tech team were absolutely amazing! Never had so much help making sure my computer would connect to the needed services."*

— **Diploma in Tropical Nursing student, 2015**



Discover more about LSTM's facilities  
[lstm.ac.uk](http://lstm.ac.uk)

# STUDENT EXPERIENCE

At LSTM we value our students and strive to ensure that you have an excellent student experience. The Student Advice and Wellbeing (SAW) team comprises of two dedicated members of staff who will support you from point of entry to graduation and are here to ensure that you enjoy your time studying at LSTM and feel part of the local community.

## Student Advice and Wellbeing (SAW) team

The Student Welfare and Advice Manager acts as the first point of contact for welfare and safeguarding enquiries. The Student Welfare and Experience Manager provides counselling sessions, mental health support and offers a range of health and wellbeing initiatives such as health walks, mindfulness sessions, stress busters and organises sports and fitness opportunities. The Student Experience Officer is the main point of contact for support around disability, accommodation or feedback practices. The SAW team work hard to ensure that you enjoy your programme, reach your greatest potential and feel a valued member of the LSTM community. The team offer social events and activities so that you are given every opportunity to experience student life in Liverpool and to make long lasting friendships.

## Disability Support

The SAW team provides confidential information, advice and guidance regarding disability to prospective and current students and to members of the teaching staff

LSTM provides support to students with a wide range of disabilities including, but not limited to:

- Learning difficulties (such as dyslexia or dyspraxia)
- Physical health and mental health conditions
- Autism spectrum conditions (such as Asperger syndrome)
- Sensory impairments
- Mobility difficulties

Based on individual need and circumstances we will identify disability related support for your academic studies and tailor support on a case-by-case basis. The Student Experience Officer provides advice on sources of funding such as the Disability Support Allowance (DSA) that may be available to students with disabilities.

You can disclose a disability at any point in the year by contacting the Student Experience Officer either by attending one of the SAW drop-in sessions or by emailing [SAW@lstm.ac.uk](mailto:SAW@lstm.ac.uk). We encourage you to disclose a disability when applying for a programme, or as soon as possible afterwards, so that support arrangements can be promptly put in place.



*"It has been wonderful learning in a multicultural environment. It is good to understand the context one works in and to take that into consideration going forward. Liverpool is also a friendly and lovely city to live in and*

*"The MSc in International Public Health Degree is taught by world-class tutors (who have both practical experiences (involved in public health research and in epidemic response across the world) and who have a work history of having worked in the public health development and humanitarian sectors across the world."*

*"The variety of backgrounds of staff and students has made for a very rich learning experience"*

*"I have a deep sense of fulfilment and will be forever grateful to LSTM for boosting my career perspective in life."*

**MSc 2018/19 students**





*"It a brilliant course. Fantastic learning opportunity, and eye-opening"*

*"It's an amazing course, so interesting and the people you meet and doors that are opened will be invaluable in your future career"*

*"Absolutely brilliant course. I'd highly recommend it to all of my friends. If I had the opportunity to do it again, I would in a flash"*

*"Really interesting and inspiring with some amazing lecture"*

DTM&H August  
2019 students

### Accommodation Information

#### Liverpool Student Homes (LSH)

Liverpool Student Homes the official university service for private accommodation and is available to all prospective and registered students at LSTM.

A range of properties are advertised on Liverpool Student Homes website. The properties are registered to the LSH Code of Practice which allows you to have confidence that accommodation is safe and of a good standard. The LSH website provides details of accommodation offered by private landlords/letting agents including; lodgings, rooms for rent in shared student houses, student flats/apartments, bed-sits and larger housing schemes.

LSH offers bespoke support to LSTM students seeing accommodation in Liverpool. You can also use the LSH discussion boards to find other LSTM students to share accommodation with.

<http://www.liverpoolstudenthomes.org>

Phone: +44 (0)151 794 3296

Email: [LSH@liverpool.ac.uk](mailto:LSH@liverpool.ac.uk)

For further guidance please contact the Student Experience Officer before or during your studies – [SAW@lstmed.ac.uk](mailto:SAW@lstmed.ac.uk)

### Student Feedback

The student voice is extremely important to us and informs everything we do. We work in partnership with our students and believe that you should be involved in developments and your feedback can help us to shape the way that we deliver our programmes and deliver services. Throughout your studies you will be given the opportunity to provide feedback through multiple channels such as surveys, focus groups and committees.

Your valuable feedback enables us to enhance your learning and student experience at LSTM.

### Social Activities

LSTM is committed to providing a healthy and inclusive community by bringing students and staff together for a range of social activities and wellbeing events. These events provide you with an opportunity to meet your fellow classmates as well as prominent world-leading academic figures within the institution. Past activities include; local football club tours, student led activities, craft sessions, coffee mornings and 'Meet a PhD Student' events for those who are interested in furthering their academic careers.



# FUNDRAISING

## DID YOU KNOW?

LSTM is a registered UK charity with 501c3 status in the US via the British Schools and Universities Foundation (BSUF)

Donations to LSTM directly impact the student experience by supporting scholarships, hardship funds, equipment and teaching facilities, such as the new Active Learning Laboratory.

Any scholarship can change an individual's life immeasurably through the opportunities it can create, but an LSTM scholarship can impact whole communities. Our students often come from healthcare professions in fragile or emerging health systems, and will often return to positions of seniority, influence and leadership. The skills developed on our programmes are shared with their colleagues, who in turn share this knowledge via their own networks – amplifying the impact far beyond an individual's own learning. The projects they undertake will be based on real situations back home, meaning that the best practice generated through then can be implemented almost immediately, resulting in improved practices and ultimately better outcomes for patients.

Donations are helping us to educate and train the next generation of scientists and health professionals who have the potential to go on to significantly change the face of global health.

Leading up to our 125th anniversary in 2023, our aim is to increase the number of scholarships that we can award to some of the brightest talent across the world. ▶



Find out more about LSTM's fundraising priorities  
[lstm.ac.uk/fundraising](https://lstm.ac.uk/fundraising)

## SCHOLARSHIP CASE STUDIES



*"I chose to study at LSTM because I wanted to be trained in an environment where students are brought together from different countries and regions to create a platform for exchanging experiences among practitioners. LSTM is known to provide courses that are very well known for their practical applicability, multidisciplinary approach, and interactive, participatory methods."*

*"The opportunity to study at LSTM will surely provide for me a vibrant international network of global health professionals whom I can work together with in the future in promoting global health."*

— **Kristal An Agrupis**  
(MSc Tropical Paediatrics, 2020)  
Thomas Mark Scholarship award



*"My application to LSTM to study for a Postgraduate certificate (PGCERT) in Global Health was motivated by my interest in antimicrobial resistance and global health. I knew that I needed to gain more knowledge in this field as this will empower me to provide solutions to health challenges in this area."*

*The scholarship has helped me to realise my dream of studying at LSTM and expand my knowledge in Global Health, which is vital to building a successful career in this field. Through this program, I will gain in-depth knowledge and key competencies in global health, which is needed to proffer solutions to global health problems such as antimicrobial resistance."*

*I am honoured and grateful to have been awarded this scholarship. Without the scholarship, I would not have been able to fund my studies."*

— **Adeola Bamsaiye** (MSc Global Health, 2021) Mamco Selab Scholarship award

# ALUMNI

When you join LSTM, you become part of a global community of world changing alumni and friends. We are proud to attract the best talent from around the world, and prouder still of what our alumni go on to achieve. Since 1898, LSTM has fostered a community of future leaders, working to break the cycle of poor health and poverty all over the world.



## Dr. Sara Mitchell (PhD, 2011)

Sara is a senior scientist who completed her undergraduate thesis, MSc and PhD here at LSTM. Sara has been fascinated by tropical diseases, and mosquitoes, ever since she first spent time at the school almost 20 years ago when participating in work experience while at Archbishop Blanch secondary school (Liverpool). Having decided to pursue a career and degree in Biological Sciences, Sara jumped at the chance to enrol on the first Tropical Disease Biology degree program to be awarded jointly by Liverpool University and LSTM.

Since leaving LSTM, Sara has gone on to an exciting career in vector research. She has worked as a Post-Doctoral Research Associate at Imperial College, London. She then went on to work with as a Research Fellow at the Harvard School of Public Health in Boston, Massachusetts until 2016. Sara then moved to work for Verily Life Sciences in San Francisco, California, where she is Senior Scientist on a project called 'Debug' – a vector control initiative led by Google which uses the Sterile Insect Technique to reduce vector populations.

## How do you think your time at LSTM has gone on to shape your career?

*"My time at LSTM has been hugely influential. LSTM was a big part of all my scientific training, which I am very thankful for. I was able to work with leading scientists in the field of mosquito biology, who dedicated time to teach me techniques, encouraged me to develop my critical thinking and also provided mentoring and friendship. My career to date is a reflection of the great education I had at LSTM. I am immensely proud to have trained at LSTM and I regularly recommend people to look think about LSTM when considering post-graduate or post-doctoral work. Working within the vector group has also driven my scientific interest in applied research, I love to see bench science really applied to the field. In my current position at Verily I am working on just that, developing sterile insects in the lab and deploying them in the field to hopefully have a real impact on vector populations and disease transmission."*

## How would you sum up your experience of LSTM?

*"The most challenging and most enjoyable period of my life. LSTM is responsible for my career, which I love, and for so many great friends."*

**"My time at LSTM has been hugely influential. LSTM was a big part of all my scientific training, which I am very thankful for."**



Meet some of our inspiring alumni  
[lstm.ac.uk/alumni](https://lstm.ac.uk/alumni)



# FINANCE & FUNDING

There are many ways to fund your studies at LSTM. Our students receive funding from many different sources, including charities, NGOs, Government Ministries, Chevening, Commonwealth, the Wellcome Trust and many others.

## LSTM Merit Scholarships

We want to enable the best and the brightest students to join our global community of students. We have a series of enhanced scholarship opportunities to help students come to LSTM. Deadlines are published on our website and all applicants are informed of details in their offer email.

Find out more:

[lstm.ac.uk/study/how-to-apply/taught-programmes-scholarships](https://lstm.ac.uk/study/how-to-apply/taught-programmes-scholarships)

## LSTM Northern Discounts

The North of England has a lot to offer and if you have already studied in the North of England, we have a special discount off tuition fees for students who wish to progress onto their MSc with us. Full eligibility is on our discounts page, which also includes alumni discount details

Find out more:

[lstm.ac.uk/study/how-to-apply/eligibility-criteria-for-discounts](https://lstm.ac.uk/study/how-to-apply/eligibility-criteria-for-discounts)

## Masters Postgraduate Student Loans

Postgraduate student loans from the Student Loans Company have been available since 2016. Student loans are now available for full-time, part-time and distance-learning Master's degrees. Please check our website regularly for updates. We also email all applicants to let them know of these opportunities and deadlines.

Find out more:

[lstm.ac.uk/postgraduate-student-loans](https://lstm.ac.uk/postgraduate-student-loans)

## Postgraduate Research Student Loans

Student loans are also available for PhD-level qualifications lasting up to eight years in all subjects. These have been available since Summer 2018. ▶

Find out more:

[gov.uk/doctoral-loan](https://gov.uk/doctoral-loan)



Find out more about finance and funding  
[lstm.ac.uk/finance-and-funding](https://lstm.ac.uk/finance-and-funding)



# OPEN DAYS

Thinking of joining LSTM? We hold two open days per year, usually in May and November. Our postgraduate Open Days give you the opportunity to talk to our experts about our taught and research programmes. Our academics, professional services staff and students are all on hand to answer your questions.

## You will be able to:

- Discover more about our taught programmes and research opportunities from current students and academic staff
- Find out more about fees and funding, including Postgraduate loans from the Student Loans Company
- Find out more about the applications process, including visas and entry requirements
- Discover scholarship opportunities and your eligibility for discounts
- Tour the facilities and speak to staff members across the organisation
- Visit our wide-ranging and interactive exhibition stands showcasing the breadth of research and work going on at LSTM

At LSTM, you will be joining a select and highly specialised postgraduate community from around the world. Furthermore, your time at LSTM will be set in one of the most culturally diverse, creative and energetic cities in the country. ▶



You can register for Open Days on our website through all MSc pages, Diploma pages and our dedicated Open Day page  
[lstm.ac.uk/lstm-postgraduate-open-day](https://lstm.ac.uk/lstm-postgraduate-open-day)

## VIRTUAL OPEN DAY

Can't make it to the open day? Then discover life at LSTM and our range of courses on our virtual open day.



Find out more about our virtual Open Days and what they are about  
[lstm.ac.uk/study/virtual-open-day](https://lstm.ac.uk/study/virtual-open-day)



# COURSES & PROGRAMMES

## HUMANITARIAN

● <b>Master's</b>	
MSc Humanitarian Studies	31
MSc Humanitarian Health Programme Management	32
MSc Humanitarian Practice (LEAP programme)	33

## CLINICAL SCIENCES

● <b>Master's</b>	
MSc Tropical and Infectious Diseases	28
MSc Tropical Paediatrics	29
● <b>Professional Diplomas</b>	
Diploma in Tropical Medicine and Hygiene	48
Diploma in Tropical Nursing	50
Diploma in Travel Health (Online)	51
● <b>Short Courses</b>	
Travel Vaccinations: Principles and Practice (online)	56
Malaria Prevention in Travel Health (online)	57
Governance and Safety in Travel Health (online)	58
Hazards in Travel Health (online)	59

## PUBLIC / GLOBAL HEALTH

● <b>Master's</b>	
MSc Global Health Programmes	36
MSc International Public Health	42
MSc International Public Health – Humanitarian Assistance	
MSc International Public Health – Sexual & Reproductive Health	
MSc International Public Health – Planning & Management	
● <b>Short Courses</b>	
Global Health (online)	61
Research Methods (online)	62
Leadership in Health Systems Management (online)	64
Epidemiology & Statistics (online)	65
Qualitative Research in Global Health (online)	66
Working with Diverse Communities (online)	67
Climate Change & Health (online)	68

## TROPICAL DISEASE BIOLOGY

● <b>Master's</b>	
MSc Tropical Disease Biology	40
Undergraduate BSc in Tropical Disease Biology	44
Intercalating Medics	44





# MASTER'S AT LSTM

LSTM's Master's programmes attract highly-motivated graduates from around the world. Programmes follow a modular framework in which students follow a core set of taught modules specified for their programme and then select from a variety of optional modules. This allows you to tailor our programmes according to your individual interests and prior experience.



***"Why LSTM?  
The reputation  
of the  
institution and  
the calibre  
of the people  
who are on  
the faculty."***

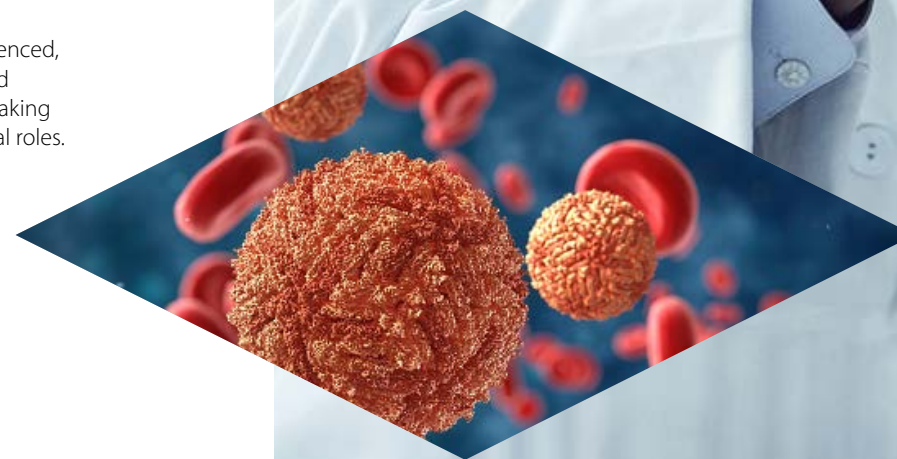
— Dr David Barr, 2015

Each Master's programme runs for 1 year, from September, including taught modules and a research project, leading to the submission of a dissertation. The research project is a highlight of the Master's Programme. It takes place from May to August, and can include fieldwork overseas. Every year, a proportion of research projects are hosted by LSTM Alumni, partners, or collaborators.

#### **We aim to:**

- Produce graduates who are experienced, committed, informed, proactive and effective professionals, capable of taking substantial and leading professional roles.
- Facilitate high-quality learning that is informed by critical analysis of current research.
- Develop independent and reflective approaches to study that will enable graduates to continue to learn in the future.

**In addition to the information here, modular frameworks and full programme specifications are available on our website.**



# CLINICAL SCIENCES MSc PROGRAMMES



Find out more about  
our work and impact  
[lstmed.ac.uk](http://lstmed.ac.uk)



# Tropical and Infectious Diseases

(MSc/PgDip/PgCert)

### Programme Outline

This programme develops research skills that are applicable to a wide range of problems in clinical and epidemiological settings. Emphasis is given to the scientific and empiric evidence for diagnosis, management and control of the most prevalent diseases in developing countries, with particular reference to high burden diseases such as tuberculosis, HIV and malaria, from a public health and clinical perspective.

This Master’s programme does not include a clinical attachment or teaching at the bedside. The programme is offered within a dynamic research-led environment and its content is informed by the cutting-edge research activities of the academic staff. It is designed to enable the professional development of the student, to be relevant to students from both the UK and overseas, and to promote approaches to study that will enable graduates to continue their learning into the future. Following the taught component, students complete a dissertation including a period of applied research either overseas or in Liverpool.

### Career Opportunities

The MSc Tropical and Infectious Diseases (MTID) provides a wide range of skills and training for doctors planning academic and clinical careers in resource-poor settings with endemic disease. It is an excellent qualification for doctors who wish to work in the field of health research in either a clinical or community context, as well as with international organisations specialising in health assistance-related activities. This MSc is a great springboard into clinical academic routes, and previous students have successfully applied for Wellcome Trust Clinical PhD Fellowships. Also, many students have had their research projects published in peer reviewed journals, enhancing their standing in the academic research environment.

### Programme Aims

- Provide doctors with previous experience in high burden diseases with research skills relevant to tropical and infectious diseases in low-income countries.
- Develop students’ knowledge and comprehension of the preventive and curative management strategies that promote health and well-being in tropical countries.
- Enable students to comprehend and conduct health-related research.

### Entrance Requirements

- Medical Degree plus 1 year experience of professional work after qualification.
- Experience of working in a developing country is desirable.
- English Language - IELTS with an overall band score of 6.5 (and a minimum of 5.5 in all learning components).



*“My time at LSTM has been enriching, it’s enriched my own personal development, not just in my field, but also for my career, academics and leadership. It’s been a wonderful experience”*

— Dr Ahmed Bulama, 2018

### 3 Good Reasons to Study



Infectious diseases are a global threat, with recent outbreaks of Avian Flu H5N1, Ebola, and Zika Virus making headlines worldwide.



Have a transformative learning experience at LSTM - develop curiosity, discover new areas that excite you, and deepen your understanding in areas you’d like to be an expert in and opportunities for research overseas as part of your dissertation.



Raise your critical awareness of global health priorities and the research underpinning them. We will also work with you to publish your dissertation research in peer reviewed journals.



*“Studying in LSTM was a lifetime opportunity where LSTM supported me to grow personally, emotionally and academically.”*

— Dr Muna Jama 2020



*“Studying in LSTM has been a life experience; from the wonderful classmates & lecturers to the beautiful city! Awesome!!!”*

— Dr Olawale Ogunlade, 2020

### Discover more about this programme



**T:** +44 (0) 151 702 9590  
**E:** mylstm@lstmed.ac.uk  
**W:** [lstmed.ac.uk/study](http://lstmed.ac.uk/study)

# Tropical Paediatrics

(MSc/PgDip)

### Programme Outline

This programme aims to provide doctors practising or intending to practise in developing countries with a critical understanding of the evidence for the control and management of diseases in childhood with particular reference to endemic diseases in tropical countries.

Students will develop their ability to appraise the evidence that underlies current practice, undertake research and lead improvements in the quality of health services delivered to children in both hospital and community settings. The curriculum reflects current national and international priorities and policies in global child health. Following the taught component, which does not include a formal hospital attachment or bed side teaching, participants complete a dissertation including a period of applied research either overseas or in Liverpool. The programme is offered within a dynamic research-led environment and its content is informed by the cutting-edge research activities of the academic staff. It is designed to enable the professional development of the student, to be relevant to students from both the UK and overseas, and to promote approaches to study that will enable graduates to continue their learning into the future.

### Career Opportunities

The MSc Tropical Paediatrics provides a wide range of skills and training for paediatricians planning academic and clinical careers in the tropics. This MSc is often a starting point for career progression, and together with a successful dissertation/research project, it can strengthen your CV when applying for promotion in clinical settings. This MSc is a great springboard into clinical academic routes. Also, many students have had their research projects published in peer reviewed journals, enhancing their standing in the academic research environment.

### Programme Aims

- Provide doctors with previous experience in paediatrics and child health, with research skills relevant to child health-related problems in low-income countries.
- Develop students’ knowledge and comprehension of the preventive and curative management strategies that promote child health and well-being in tropical countries.
- Enable students to comprehend and conduct child health-related research.

### Entrance Requirements

- Medical degree plus at least one years’ experience of professional work in clinical paediatrics after qualification.
- Experience of working in a developing country is desirable.
- English Language - IELTS with an overall band score of 6.5 (and a minimum of 5.5 in all learning components).

### 3 Good Reasons to Study



Learning from leading experts in the field of global child health, you will identify the gaps in child health related research and service delivery, and discuss how to overcome them.



You will be able to become a better clinical and public health practitioner in maternal and child health, and an informed advocate for global child health.



You will study a specific topic related to child health, independently and in depth; from identifying the research question, through data collection and analysis, until write up.



*“The course was very challenging, and I learnt a lot from it and I feel I’m a better clinician now... Since going home to Kenya, I’ve now been given additional responsibilities to run the training and research committee and at the same I’m doing quality improvement projects in the hospital. I feel like I am having an impact by putting my Master’s learning into practice straight away.”*

— Dr Nelly Dindi, 2018

### Discover more about this programme



**T:** +44 (0) 151 702 9590  
**E:** mylstm@lstmed.ac.uk  
**W:** [lstmed.ac.uk/study](http://lstmed.ac.uk/study)



# HUMANITARIAN MSC PROGRAMMES



## Humanitarian Studies

(MSc/PgDip/PgCert)

### INTERCALATE

#### 3 Good Reasons to Study



It is the longest established humanitarian studies programme in the UK, and whilst being in LSTM, it prepares you for many aspects of careers in the fields of humanitarian and development work.



It offers a wonderful and unique opportunity to do research for your dissertation abroad whilst working with key organisations in the field to provide career experience.



LSTM is filled with students from all over the world that you can learn with and from, and offers the chance of new international friendships, as well as networking opportunities with staff and NGOs.

#### Entrance Requirements

- Open to graduates with at least a Second Class Honours Bachelor's degree or overseas equivalent, although each application is judged on its own merits and exceptions to this entry requirement may be made. We will consider graduates from all disciplines as the programme is interdisciplinary.
- Evidence of engagement with the humanitarian or voluntary sector is desirable, but not essential.
- Medical students who have completed at least three years of study and wish to intercalate are also accepted onto the programme.
- Non-graduates with considerable satisfactory work experience and evidence of in-service training will also be considered.
- IELTS with an overall band of 6.5 (and a minimum of 5.5 in all learning components).

#### Discover more about this programme



**T:** +44 (0) 151 702 9590  
**E:** mylstm@lstmed.ac.uk  
**W:** [lstmed.ac.uk/study](http://lstmed.ac.uk/study)

#### Programme Outline

The programme reviews historical and current policies and practice in humanitarian assistance, analyses the effect of war, natural disasters, and the international economy on social dislocation, health and wellbeing, investigates the evidence base for current operational guidelines, and explores novel approaches in responding to the challenges of today's humanitarian problems.

It is responding to the need for a professional, integrated, accountable, and ethical approach to humanitarian interventions, in which humanitarian workers are often called upon to operate in environments where demands extend beyond conventional professional boundaries. Opportunities for in-depth study include regional and country case studies and a choice of modules addressing specific aspects of humanitarian interventions. In addition, the programme offers participants an opportunity to develop and undertake a research project, usually overseas, in an area of special interest indicated by client non-governmental organisations, international organisations, or national ministries. The programme is offered within a dynamic research-led environment and its content is informed by the cutting-edge research activities of the academic staff. It is designed to enable the professional development of the student, to be relevant to students from both the UK and overseas, and to promote approaches to study that will enable graduates to continue their learning into the future.

#### Programme Aims

- Provide a deeper understanding of the political economy of humanitarian emergencies including the internally displaced, refugees and migrants; the historical context; regional and country case studies; the effect of war and natural disasters and the international economy on social dislocation, health and well-being.
- Provide an interdisciplinary forum in which participants from a variety of professional backgrounds (eg health, political and social sciences, engineering, agriculture, development, international humanitarian law, human rights, administration and media) can review critically and debate key issues of mutual interest.
- Give participants an opportunity to conduct an independent, in-depth research study of a specialist aspect of humanitarian interventions in the field.

#### Career Opportunities

The MSc Humanitarian Studies (MHS) aims to strengthen links between academic institutions and operational humanitarian organisations. The skills, knowledge, and understanding of humanitarian issues gained during the programme, equip graduates to practice at a senior level in organisations involved in the prevention of, and response to, humanitarian crises. Past students have gone on to take a wide variety of positions, including Head of Policy and Strategy for MSF (Doctors without Borders), through to country director roles, with project placements all over the world. Many have also gone into other fields such as the public sector in the UK, social enterprises, law, social work, Political Advisor in the British Parliament, and so on.



# Humanitarian Health Programme Management

(MSc/PgDip/PgCert)

### Programme Outline

The programme investigates current approaches to humanitarian health-programme management, and identifies and develops models of good practice. It is a multidisciplinary programme designed to meet the growing requirement for professional management training in humanitarian aid, to meet the needs of development organisations managing increasingly complex and costly programmes.

Opportunities for in-depth study include regional and country case studies, and a choice of modules addressing specific aspects of humanitarian interventions. In addition, the programme offers participants an opportunity to develop and undertake a research project, usually overseas, in an area of special interest indicated by client non-governmental organisations, international organisations, or national ministries. The programme is offered within a dynamic research-led environment and its content is informed by the cutting-edge research activities of the academic staff. It is designed to enable the professional development of the student, to be relevant to students from both the UK and overseas, and to promote approaches to study that will enable graduates to continue their learning into the future.

### Career Opportunities

The skills, knowledge, and understanding of humanitarian issues gained during the programme, equip graduates to practice at a senior level in organisations involved in the prevention of, and response to, humanitarian crises. Past students have gone on to take a wide variety of positions, including Head of Policy and Strategy for MSF (Doctors without Borders), through to country director roles, with project placements all over the world. Many have also gone into other fields such as the public sector in the UK, social enterprises, law, social work, Political Advisor in the British Parliament, and so on.

### Programme Aims

- The curriculum has been designed to take account of current national and international priorities and policies in the field of humanitarian health programme management. It aims to:
- Explain the political and economic determinants of health and well-being in humanitarian emergencies, and critically review the evolution of, and current debate on, approaches to sustainable development
  - Provide you with the practical skills and confidence required to manage the financial aspects of humanitarian programmes, to maximise their efficiency, effectiveness, and accountability
  - Provide an interdisciplinary forum in which participants from a variety of professional backgrounds (eg, health, political and social sciences, engineering, agriculture, development, international humanitarian law, human rights, administration, and media) can review critically, and debate key issues of mutual interest
  - Give you an opportunity to conduct an independent in-depth research study of a specialist aspect of humanitarian interventions in the field

### 3 Good Reasons to Study



It is the longest established humanitarian studies programme in the UK, and whilst being in LSTM, it prepares you for many aspects of careers in the fields of humanitarian and development work. You will choose from a wide number of modules including media and advocacy, health in emergencies, logistics, and water and sanitation.



It offers a wonderful and unique opportunity to do research for your dissertation abroad whilst working with key organisations in the field to provide career experience.



LSTM is filled with students from all over the world that you can learn with and from, and offers the chance of new international friendships, as well as networking opportunities with staff and NGOs.

### Entrance Requirements

- Open to graduates with at least twelve months' humanitarian assistance or developing countries professional experience.
- Medical students who have completed at least three years of study and wish to intercalate are also accepted onto the programme subject to having appropriate experience.
- Non-graduates with considerable satisfactory work experience and evidence of appropriate in-service training will also be considered. Field experience is desirable but not essential.
- IELTS with an overall band of 6.5 (and a minimum of 5.5 in all learning components).

*"I had a memorable time at LSTM, learning and meeting amazing people on and off campus! Good balance of work and fun!"*

— Chipo Takawira, 2020

### Discover more about this programme



**T:** +44 (0) 151 702 9590  
**E:** mylstm@lstmed.ac.uk  
**W:** lstmed.ac.uk/study

LEAP brings together the best minds from across the humanitarian sector to deliver flexible and compelling courses in humanitarian practice.

**Leap** Leadership Education Academic Partnership

IN PARTNERSHIP WITH:








# Humanitarian Practice (LEAP Programme)

Delivered jointly by the Liverpool School of Tropical Medicine and the University of Manchester's Humanitarian and Conflict Response Institute. Degree awarded by the University of Manchester.  
(MSc/PgDip/PgCert)

## 3 Good Reasons to Study

-  The programme has been designed in partnership with Médecins Sans Frontières /Doctors Without Borders (MSF) to respond to the needs of humanitarian organizations.
-  Students will benefit from studying at two academic institutions recognised globally for the excellence of research and outstanding learning and student experience.
-  This is a flexible course designed to fit around the work commitments of those already in the humanitarian sector.

## Entry Criteria

This programme is designed for those working in the humanitarian field or with extensive experience of humanitarian work.

Applicants should hold a Second Class Honours degree, or its overseas equivalent. An exception may be made for candidates who have extensive professional humanitarian training and experience.

## English Language Requirements

An overall grade of above 6.5 (preferably 7) in IELTS is required, or above 88 in the TOEFL iBT.

Other English language qualifications can be accepted in accordance with the University of Manchester requirements.

## Discover more about this programme

 W: [humanitarianleap.org](http://humanitarianleap.org)

## Course Overview

**The MSc in Humanitarian Practice has been created to meet the professional and personal development needs of those working in the humanitarian sector, producing graduates who will meet the increasing demand for humanitarian leadership. The blended nature of this course promotes lifelong learning.**

It is delivered as part of the Leadership Education Academic Partnership (LEAP) programme and crosses traditional subject boundaries to enable you to reflect critically on issues arising from your own work, the wider humanitarian agenda and develop the skills set needed for contemporary humanitarian practitioners. Focusing on a wide range of humanitarian issues, the programme offers a thorough investigation of the agents of change in the humanitarian field.

It brings together the disciplines of public and global health, political science, international relations, history, epidemiology, disaster risk management and peacebuilding, as well as the expertise of academics and leading practitioners.

As an LSTM and HCRI student, you will benefit from a comprehensive and multidisciplinary approach to teaching and research, as well as individual tutoring and supervision from academics from a wide range of disciplines.

## Unique Partnerships

The programme is delivered jointly by the Liverpool School of Tropical Medicine (LSTM) and the University of Manchester's Humanitarian and Conflict Response Institute (HCRI) in partnership with international medical humanitarian organisation Médecins Sans Frontières /Doctors Without Borders (MSF). This partnership brings together multidisciplinary academic expertise and operational humanitarian experience and opens access to a broad range of courses across the two academic institutions. The programme has been designed to reflect the scoping and strategic needs as identified by MSF, but also relevant for other humanitarian organizations. Through the partnership we ensure that the programme will enhance the knowledge and skills of staff who work in a humanitarian organisation setting.



## Course Aims

- The overarching aim of the programme is to enhance the effectiveness of emergency response and humanitarian action, through employing multidisciplinary approaches and epistemologies and to:
- lead and excel in professional education, applied research and partnership for the betterment of local and international communities;
  - nurture graduates who are critical thinkers, effective communicators, innovative problem solvers, lifelong learners and ethical leaders;
  - advance knowledge to meet the changing needs of society; and
  - support a university community and humanitarian sector in which all members can excel through education and scholarship.

## Flexible Blended Programme

This is a flexible programme designed to allow study to fit around the work commitments of those already working in the humanitarian sector. It offers three entry routes leading to a Postgraduate Certificate, Postgraduate Diploma or a Master of Science (MSc).

Each qualification can be completed in a full time or part time mode. The programme comprises core modules delivered jointly by academics at the Liverpool School of Tropical Medicine and the University of Manchester and a wide range of optional modules available at both institutions.

The blended learning approach combines online and campus-based learning. This flexible approach gives you the best of both worlds: opportunities to work where and when it suits you as well as access to the face-to-face teaching, world-class facilities and networking available at the Liverpool School of Tropical Medicine and the University of Manchester. Through a combination of blended modules, short courses, traditional semester long units and online provision students will be able to access the programmes at times which are convenient to their working lives and study modules both remotely online and in person at the Liverpool School of Tropical Medicine and the University of Manchester for short periods of time.

- The duration of studies is also flexible:
- 12 to 60 months for MSc in Humanitarian Practice,
  - 9 to 48 months for Postgraduate Diploma in Humanitarian Practice,
  - 6 to 24 months for Postgraduate Certificate in Humanitarian Practice.

## Career Development

- The programme will enable you to critically reflect on your work and will provide you with the relevant academic background to inform decisions made in practice.
- LEAP will enhance your skills and knowledge, enabling you to better meet the needs of the populations you serve.
- The studies will strengthen your leadership skills and help you to grow into a management or coordination position within a humanitarian organisation.



## Discover more about this programme

 W: [www.humanitarianleap.org](http://www.humanitarianleap.org)





# GLOBAL HEALTH PROGRAMMES

*"I joined LSTM's global health course because I want to make an impact in the world by preventing and eradicating present and future health concerns that transcends national boundaries. Global health threats (such as climate change) have unavoidably been a great concern to major stakeholders, countries and international organisations & bodies, hence the importance and rising need of global health professionals."*

— **Chioma Mbonu, Nigeria – 2019**

## Global Health Programmes

(MSc/PgDip/PgCert)

Part time and Full Time available

### 3 Good Reasons to Study



The curriculum is designed in close consultation with employers, experts and stakeholders from global health agencies to ensure graduate employability and success in the workplace.



The programme is delivered through a flexible approach with students from different parts of the world and a high-quality research led academic environment.



The programme offers three pathways Master of Science (MSc – 180 credits), Postgraduate Diploma (120 Credits) or Postgraduate Certificate (60 Credits) that bring a multidisciplinary global context of health to develop transferable skills, knowledge and competencies for health action and impact.

### Entrance Requirements

- English language – IELTS with an overall band of 6.5 (and a minimum of 5.5 in all learning components).
- Graduates from recognised universities generally require at least a year of professional or voluntary experience in health or a related area. Candidates without this work experience are eligible, provided they can demonstrate an understanding and engagement with global health issues.

### Programme Outline

**LSTM's Global Health programmes seek to address priorities identified in several global health frameworks. These priorities include addressing global health inequalities through workforce development, leadership in health systems improvements, facilitating universal health coverage, promoting gender equity and creating meaningful partnerships for global health.**

The programmes are underpinned by LSTM's mission of decreasing the global disease burden through research, education and building capacity. The programmes also contribute towards building skills and competencies of organisations and individuals working in the global health sector. Graduates will develop high-level transferable knowledge, intellectual and practical skills enabling them to take a leadership role in providing technical support and addressing the social determinants of health. Graduates will be able to work with diverse populations and in a wide range of settings.

The programmes' competency-based curriculum was developed following close consultation with employers and key stakeholders, a review of global health competencies from renowned global health agencies and informed by evidence from global health employers to ensure relevancy and graduate employability. The MSc, PGDip and PGCert programmes cover a wide range of global health topics that provide graduates with key analytical, technical and practical skills for working in a diverse global world.

### The Programmes will develop:

- Critical knowledge and skills for addressing the global burden of disease using various strategies including surveillance, research methodologies and strengthening of health systems.
- Critical knowledge and leadership skills for effective health systems management to address global health inequalities.
- Critical knowledge and skills for promoting and protecting population health from global threats.
- Critical knowledge and skills for collaborative working using professional values and human rights frameworks with diverse global cultures.



**MSc PGDip PGCert – Flexible learning around your work and life**  
LSTM's Global Health programme offers flexible opportunities that fit study around your work, career aspirations and lifestyle. We offer a range of online modules and self-directed learning. Research informed discussions are at the core of our online learning model, offering a rich and dynamic learning experience. The tutors are global health experts who are the heart of LSTM's world-class research. Students will be afforded a range of opportunities to benefit from LSTM's high-quality academic and research environment as well as the programme's focus on providing practice-relevant skills and competencies.

**Who can apply?**  
The programmes are open to university graduates in health, or related disciplines. Graduates from other disciplines are encouraged to apply. Non-graduates with considerable work experience in the health sector and can provide evidence of continued academic development through appropriate in-service training will also be considered.

Qualification	Number of modules	Duration Part Time	Duration Full Time
MSc	6 Modules + research report	2 years	1 year
Postgraduate Diploma (PgDip)	6 Modules (3 core + 3 optional)	20 months	8 months
Postgraduate Certificate (PgCert)	3 Core Modules	8 months	N/A



**Discover more about this programme**

 **T:** +44 (0) 151 702 9590  
 **E:** mylstm@lstmed.ac.uk  
 **W:** lstmed.ac.uk/study

**Career Opportunities**  
There are many career opportunities within global health in high income countries such as the UK and low and middle-income countries throughout the world. The careers cover a wide range of options including:

- Environmental protection
- Research
- Education
- Promotion of health and wellbeing
- Management of health systems

Graduates can be involved in developing strategies, e.g. for communicable and non-communicable diseases and managing health emergencies, disasters resulting from human conflicts, climate change and subsequent population displacements.

Potential employers include:

- Public Health England
- Local Authorities
- World Health Organisation (WHO)
- United Nations agencies
- Centre for Disease Control
- Philanthropic organisations
- Ministries of Health
- Education
- Agriculture
- Non-governmental organisations
- Charities

**Graduates can become Global Health Consultants, Educators, Researchers, Managers, Health Promoters / Protectors, Global Health Specialists, Diplomats, Advocacy Workers, Community Workers etc.**



*"Our flagship MSc Global Health programme is innovative in its content and delivery model, and distinctive in its field-led and research-informed approach. Our students will benefit from a truly global experience."*

— **Dr Martha Chinouya**  
MSc Global Health Programme Director



# TROPICAL DISEASE BIOLOGY MSc PROGRAMME



# Tropical Disease Biology

(MSc/PgDip/PgCert)

Previously known as Biology and Control of Parasites and Disease Vectors / Molecular Biology of Parasites and Disease Vector

### Programme Outline

This programme provides advanced contemporary training in parasitology and the study of disease vectors and the pathogens they transmit. The broad scope of the programme ranges from the biology, immunology, ecology and population biology of the organisms of importance to public health, disease epidemiology and tropical health issues.



In addition to providing a solid foundation in pathogen, parasite and vector biology, the programme provides practical experience of essential techniques, as well as significant theoretical and practical knowledge in all important and topical areas of the field. Following the taught component, participants complete a dissertation including a period of applied research either overseas or in Liverpool.

### Programme Aims

LSTM education courses are taught within a dynamic environment by staff working at the cutting-edge of research in tropical medicine and global health. They are designed to enable the professional development of the student, to be relevant to students from both the UK and overseas and to promote approaches to study that will enable students to continue their learning into the future.

This course aims to:

- Equip students with the knowledge and practical skills needed to develop a career in research, training or control of vector-borne diseases, pathogens, parasites, and organisms of importance to public health with particular emphasis on tropical and resource-poor regions of the world.
- Provide practical experience of a range of specialised technical and analytical skills relevant to the study of disease vectors, pathogens, parasites, and organisms of importance to public health with particular emphasis on tropical and resource-poor regions of the world.
- Enable students to conduct independent research in the laboratory and/or field. Produce graduates who are experienced, committed, informed, proactive and effective professionals, capable of taking substantial and leading professional roles.
- Facilitate high quality learning that is informed by critical analysis of current research.

## INTERCALATE

### 3 Good Reasons to Study



Tropical disease caused by pathogens blights the lives of over a billion people globally. You will develop a deep understanding of the biology of these organisms, and vectors that spread these diseases, in the fight against these debilitating infections.



Delivered by the LSTM Parasitology and Vectors of Disease Departments using state of the art laboratory facilities and with industrial collaborations, coupled with a strong research based that works in countries throughout resource-limited tropical regions of the world.



Provide you with practical experience of essential techniques, as well as significant theoretical and practical knowledge in all important and topical areas of the field of tropical disease biology, all taught within an active and exciting scientific environment.

### Academic Requirements

- Open to graduates with an Honours degree (2.ii or equivalent) in the biological sciences or a medical/veterinary degree.
- Overseas candidates with other qualifications may be accepted, particularly if they have the relevant experience through working in an appropriate field for a number of years.
- Medical or Veterinary students who have completed at least three years of study and wish to intercalate are also accepted onto the programme.

### Discover more about this programme



**T:** +44 (0) 151 702 9590  
**E:** mylstm@lstmed.ac.uk  
**W:** lstmed.ac.uk/study

### Recognition of Prior Learning

All programmes of study will permit entry with credit attributed to previous certificated study up to a total of one third of the credits required to be awarded a MSc Degree, Postgraduate Diploma, Postgraduate Certificate or Postgraduate Award.

### Work Experience

Non-graduates with considerable satisfactory work experience and evidence of appropriate in-service training will also be considered.

### English Language Requirements

IELTS with an overall band of 6.5 (and a minimum of 5.5 in all learning components). Full list of English language qualifications LSTM accept is on the website.

### Career Opportunities

Many alumni of LSTM hold prominent positions in health ministries, universities, hospitals, and international organisations throughout the world. Graduates are competitively placed to begin PhD programmes, seek employment within research programmes, work overseas in developing countries with a wide variety of employers including NGOs, military and public health-related employers, enter teacher training, or return to previous employers with enhanced knowledge and skills with which to advance their existing careers. Graduates of the MSc Tropical Disease Biology have undergone excellent general preparation for a career in laboratory and field research in biological sciences, and are particularly well placed for careers in research or training in areas related to organisms of importance to public health, pathogen, parasitic and vector-borne diseases globally, and particularly within tropical or resource-poor regions of the world.



*"LSTM is challenged to stay at the cutting edge of teaching. Everything is constantly changing. Climate change, civil unrest, natural disasters, etc.. affect resource-poor areas of the tropics and interventions change the prevalence and intensity of disease. We can't roll out the same lectures each year – our teaching responds to those evolving challenges. Our students must be ready to work in those areas and in labs, so we have to keep on our toes."*



*"The jewel in the crown here is the fact that our students have the opportunity to learn overseas. A great deal of our students come here specifically because they get opportunities to work in tropical regions on their research. It's being able to go out and see the challenges in the real world – there's nothing like it. Field work transforms people's careers and their view of those problems"*

— **Dr James Lacourse**  
Director of Studies



*"Studying at LSTM was a wonderful experience that I will treasure for life. I met so many amazing people"*

— **Molly Cliff 2020**

*"Being part of the LSTM community and completing a master's degree here has been one of my most valuable experiences to date"*

— **Joe Clarkson, 2020**



## INTERCALATE

## 4 Pathways

1. International Public Health
2. International Public Health: Humanitarian Assistance
3. International Public Health: Sexual and Reproductive Health
4. International Public Health: Planning and Management

## 3 Good Reasons to Study



You will be taught by staff who are renowned experts in their fields of public health.



You will be given the opportunity to undertake your own real research project at home or overseas, with high levels of support throughout.



LSTM is filled with students from all over the world that you can learn with and from, and offers the chance of new international friendships, as well as networking opportunities.

*"Intercalating at LSTM was remarkable year of broadening my knowledge and research proficiency with amazing colleagues and staff"*

— Victoria Simpson, MIPH 2020

*The close-knit nature of LSTM allowed me to create great memories, acquire new skills and lifelong connections and friendships."*

— Dr Sia Tengbe, MIPH-SRH 2020

## Discover more about this programme



**T:** +44 (0) 151 702 9590  
**E:** mylstm@lstmed.ac.uk  
**W:** lstmed.ac.uk/study

## International Public Health

(MSc/PgDip/PgCert)

## Programme Outline

**This programme equips graduates to provide leadership and technical support in public health in middle income and low-income countries.**

It covers a wide range of topics in public and global health, including key disciplinary skills in epidemiology and social science, and applied topics such as disease control and programme management. The programme examines current policies and practice in international public health, and explores approaches to developing policy and enhancing practice based upon sound, evidence based principles. Following the taught component, participants complete a dissertation including a period of applied research, either overseas or in Liverpool. The programme is offered within a dynamic research-led environment and its content is informed by the cutting-edge research activities of the academic staff.

## Programme Aims

- **MSc International Public Health** To understand current policies and practice in international public health, and to explore approaches to developing policy and enhancing practice based upon sound, evidence-based principles. It aims to provide students with the knowledge and skills needed to be part of senior management teams that develop, implement, and evaluate policies and strategies to improve health in communities, countries, and globally.
- **MSc International Public Health (Humanitarian Assistance, HA)** To understand current policies and practice in humanitarian assistance, and to explore approaches to responding to the challenges of today's humanitarian problems. It aims to provide students with the skills, knowledge, and understanding of humanitarian issues needed to practise at a senior level in organisations involved in the prevention of, and response to, humanitarian crises.
- **MSc International Public Health (Sexual and Reproductive Health, SRH)** To gain a deeper understanding of international aspects of sexual and reproductive health (SRH) in middle-income and low-income countries. It aims to provide students with knowledge and skills needed to enable them to contribute to the strengthening of health systems in support of SRH (including maternal & neonatal health, MNH); facilitate the implementation and scale-up of good practice; and raise awareness amongst politicians, professionals, and the public of the need for more effective use of knowledge and tools to impact on SRH indicators.
- **MSc International Public Health (Planning and Management P&M)** To gain an insight into the theories and methods of improving and managing health systems and human resources in middle-income and low-income countries. It aims to provide students with the knowledge and skills needed to enable them to contribute positively to the effectiveness of health-care organisations, using quality and human resource management initiatives.

## Entrance Requirements

- Open to health professionals and graduates in health or related disciplines.
- Non-graduates with considerable work experience in the health sector of low or middle income countries and evidence of continued academic development through appropriate in-service training will also be considered.
- Medical students who have completed at least three years of study and wish to intercalate are also accepted onto all programme streams subject to having appropriate experience.
- IELTS with an overall band of 6.5 (and a minimum of 5.5 in all learning components).
- Candidates generally require professional or voluntary experience in health or a related area in a low or middle income country.
- Candidates without this experience are eligible, provided they can demonstrate an understanding and engagement in global health problems.

## Career Opportunities

There are many career opportunities within the field of Public Health throughout the world. Public Health emergencies have been highlighted recently by the Ebola Outbreak in West Africa, H5N1 Avian Influenza, Zika Virus, and MERS. People with public health skills are highly sought after. Public health careers cover a wide variety of options from disease control, disease surveillance, non-communicable disease strategies, childhood vaccinations, government policies and strategies, reducing infant mortality, etc - to name but a few. Past alumni of this course typically go and work for health ministries, health departments, national or international disease control agencies, UN Agencies, aid organisations, or universities.



# Undergraduate BSc in Tropical Disease Biology

**Programme Outline**

The BSc in Tropical Disease Biology is an Honours degree programme offered by the School of Biological Science, University of Liverpool, with the final Honours year run and based in LSTM.

The degree programme is aimed at students who are interested in a range of aspects of the biology of infectious disease (from organism life cycles to epidemiology and molecular biology) in the context of global disease issues, with an emphasis on the tropics. The course includes a practical skills module in Tropical Medicine in Year 2, with final year modules in Parasitic Protozoa and Helminths, Parasitology including Immunology and Molecular Biology, Vector Biology, Chemotherapy and Topics in Global Health, and a Research Project.

Graduates with a degree in Tropical Disease Biology are well qualified to enter a wide range of employment opportunities with rewarding careers in biotechnology, pharmaceuticals, and other key areas. For those committed to a career as a research scientist, further study for a higher degree in science or subjects allied to medicine is the normal route, and several past students have continued their training by enrolling onto Masters and PhD programmes at LSTM.

To apply to the BSc Tropical Disease Biology, school leavers should apply through UCAS as normal. For intercalating medics – applications should be directed to the School of Life Sciences at the University of Liverpool direct.

# Intercalating Medics

Intercalating is associated with improved performance in Years 4 and 5 of the MBChB. This improved performance will further contribute to higher academic ranking for Foundation Year posts. You can intercalate at LSTM on:

- BSc Tropical Disease Biology
- MSc Tropical Disease Biology
- MSc Humanitarian Studies
- MSc International Public Health
- MSc International Public Health – Humanitarian Assistance
- MSc International Public Health – Sexual & Reproductive Health
- MSc International Public Health – Planning & Management

**Intercalating Medic Prize**

We are delighted to offer a competitive scholarship prize for funding your overseas project. This will be between £1500-£3500 depending on your project. Our research projects are often one of the most memorable aspects of a Masters at LSTM but can be out of reach for some students due to finances. We want to help you on your way to becoming leaders of the future.

Applying for this scholarship will be giving you a great opportunity to showcase your skills. Taking part in this process works on your communications, thinking about the bigger picture / multidisciplinary approach, writing an abstract, successfully applying for funding. This is not just about walking away with the funding, it's also about the extra transferrable skills.

**Discover more about this programme**



T: +44 (0) 151 702 9590  
E: mylstm@lstmed.ac.uk  
W: lstmed.ac.uk/study





# PROFESSIONAL DIPLOMAS AT LSTM

These courses are ideal for students with limited time or those wishing to study selectively. Our Professional courses range from 3 to 13 weeks duration and aim to prepare you with key knowledge in a short amount of time.



*“LSTM is full of inspirational teachers ... they have in-depth knowledge of their specialities, and many are international leaders and advisers”*

Our Professional range of courses offer highly intensive study from a world class faculty and allow you to immerse yourself into the subjects whilst on study break/annual leave from your career. They also offer huge networking potential with students coming from over 60 countries. We also work with key partners to ensure our Professional programmes are fit for purpose and many are accredited or recognised with Royal Colleges such as the Royal College of Nursing, the Royal College of Midwives, and the Royal College of Physicians. You will see many are also recommended by key organisations such as Médecins Sans Frontières. Some of our Professional courses have been running for over 100 years such as the Diploma in Tropical Medicine and Hygiene (DTMH), and are world-renowned.



*“LSTM is full of inspirational teachers. Many have spent time living in resourcepoor settings and they are committed to improving the health of people living in poor countries. Most are active researchers so they have in-depth knowledge of their specialities, and many are international leaders and advisers.”*

— Professor Imelda Bates



In addition to the information here, full programme specifications and assessment details are available on our website.  
[www.lstmed.ac.uk](http://www.lstmed.ac.uk)

# PROFESSIONAL DIPLOMA PROGRAMMES





# Diploma in Tropical Medicine and Hygiene

(DTM&H)

Full Time: 3 months (2 intakes per year in September & February)

## Programme Outline

**This programme is particularly useful for physicians who have trained in medicine in a developed country, but intend to practise in the tropics.**

It is also useful for physicians already practising in developing countries who require an update on infectious, parasitic, and other health problems, and for doctors in developed countries who need to diagnose and manage imported infections. It is recognised as fulfilling part of the requirements for the American Society of Tropical Medicine and Hygiene Certificate in Travel Medicine. This is a highly intensive course with lectures, practical exercises, tutorials, and a range of seminars which provide opportunities for small group work. Much of the practical work in the Dagnall Laboratory is hands-on, backed up with a range of demonstration materials, and facilitated by academic and technical staff. You will cover four main components: 1) Clinical Tropical Medicine & Child Health 2) Parasitology 3) Vector Biology 4) Public Health.

## Career Opportunities

Doctors with DTMH typically work with NGOs and IOs directly after the course, providing a valuable year out of core or specialty training. Also, many medical retirees join us on the DTMH before starting volunteer work overseas. The DTMH is essential criteria for working with large NGOs, such as Médecins Sans Frontières (MSF).

## Programme Aims

- Design programmes, prepare action plans, and evaluate them to produce effective public health interventions for vulnerable communities and populations, including those affected by conflict and disaster.
- Evaluate clinical presentation, diagnosis and management of major communicable, non-communicable and neglected diseases in LMICs, and explain principles of their epidemiology and control.
- Analyse specific health and health system challenges affecting vulnerable groups living in LMICs and choose strategies and apply programme management principles to overcome them.
- Explain and illustrate the importance of social, cultural and economic factors on planning, management, implementation and uptake of preventative and curative health services and disease control programmes in LMICs.
- Appraise major diagnostic strategies for controlling diseases of LMIC and identify relevant stages of development of important pathogens and vectors responsible for causing and transmitting human disease in LMICs.
- Summarise key biological characters of major insect vectors of disease and explain their relevance in the epidemiology and control of communicable diseases in LMICs.
- Analyse, synthesise and evaluate information from a variety of sources in a critical manner; eg evaluate clinical practice according to national/international management guidelines.
- Apply subject knowledge and understanding in a variety of contexts to analyse and reach evidence-based conclusions on complex situations, problems and opportunities
- Identify and describe pathogens important in the diagnosis of diseases of LMICs and distinguish these from non-pathogenic organisms.
- Identify important insect vectors of disease in LMICs
- Lead and participate in a health professional team and personally manage clinical problems commonly encountered in LMICs.
- Devise strategies for assessing and improving community health in LMICs.

## Entrance Requirements

- A recognised medical degree.
- At least 2 years' experience of professional work after qualification

## 3 Good Reasons to Study



Our faculty and graduates are at the forefront of the fight against diseases of poverty worldwide, and are highly sought after by MSF and other leading NGOs and IOs.



We are world leaders in research and response to existing and emerging diseases threatening global health and security.



You will emerge from the programme with a deeper understanding of the complex cultural, social, political, economic, and technical challenges and opportunities for improving the health and wellbeing of individuals and communities throughout the world today.

*"It is truly an amazing experience to be here at LSTM on the DTM&H course. Wonderful tutors, friendly staff and great environment; all in one place at the same time. I am so happy to have made the right choice to attend the course at LSTM."*

— Dr Michael Kamara, Sierra Leone on the Spring 2019 DTM&H

*I feel very privileged and fortunate to have been a student at LSTM over the past few months. The course deserves its excellent reputation, and it is clearly in safe hands as it continues to respond to our ever-changing world. I was very impressed from the moment of my arrival by the levels of professionalism and enthusiasm displayed by all members of the School. It was obvious that everybody greatly enjoys teaching on the course, and this led to a highly conducive environment for learning, whilst still having fun!*

— Dr Tom Bennett Britton, May 2019)

*A great review of tropical diseases by truly outstanding scholars. Seeing Dr David Nabarro speak was one of many highlights for me.*

— Connie Abrey, 2020

## Discover more about this programme

T: +44 (0) 151 702 9590  
E: [mylstm@lstmed.ac.uk](mailto:mylstm@lstmed.ac.uk)  
W: [lstmed.ac.uk/study](http://lstmed.ac.uk/study)





LSTM are delighted to support the International Year of the Nurse and the Midwife

# Diploma in Tropical Nursing

(DTN)

3 week full-time course followed by a 3 week assessment period. Students only need to be in LSTM for 3 weeks, the remaining time can be taken whilst working around your other commitments.  
2 intakes per year in May & December

### Programme Outline

The Diploma in Tropical Nursing (DTN) is awarded by the Liverpool School of Tropical Medicine (LSTM) as part of its suite of non-credit bearing Professional Diploma programmes aimed at enhancing the knowledge, skills, and competencies of healthcare professionals working in low-income and middle-income settings.

The DTN aims to familiarise participants with common health issues in overseas settings, helping them to develop their analytical, problem solving, and practical nursing skills. The curriculum is flexible to include sessions relevant to current international events, and also contains a strong laboratory element. The programme provides up-to-date factual knowledge and current best practice. The course is accredited by the Royal College of Nursing for 90 study hours. The curriculum has been informed by the requirements of organisations deploying nurses in low-income and middle-income countries (eg, Médecins Sans Frontières; Voluntary Service Overseas), and is designed to introduce common health topics that nurses and midwives are likely to come across whilst working in these settings.

### Programme Aims

LSTM education courses are taught within a dynamic environment by staff working at the cutting-edge of research in tropical medicine and global health. They are designed to enable the professional development of the student, to be relevant to students from both the UK and overseas and to promote approaches to study that will enable students to continue their learning into the future.

- Equip participants with knowledge and practical skills relevant to nursing in low and middle income countries.
- Produce graduates who are informed and effective professionals, able to work in teams as well as individuals.
- Facilitate high quality learning that is informed by up-to-date knowledge and current best practice.
- Develop independent and reflective approaches to study that will enable graduates to continue to learn in the future.

### Career Opportunities

This course provides a global perspective of the complex issues of working as a nurse in the challenging context of low-income and middle-income countries. We will facilitate well-developed management and leadership skills to assist health service coordination – an attractive skill-set of working in resource-poor settings. We will also work on refined interpersonal skills and ability to think and act critically and flexibly. Overall, most nurses and midwives undertake this course to facilitate their entry into working in humanitarian aid and volunteer work overseas.

### 3 Good Reasons to Study



Tropical Nursing is recommended by key NGOs, such as MSF, as an entry-level requirement for nursing work overseas, and therefore opens up job opportunities.



Learning alongside nurses from all over the world, you will find the course enriching and motivational.



You will gain many strategies and key knowledge to enable you to work competently in challenging and low resourced settings.

### Entrance Requirements

- Registered General Nurse or Midwife
- At least 2 years post-registration practice

*I completed the DTN in November 2017. After the completion of the DTN I joined the humanitarian emergency response roster for an international NGO and spent 3 months working in the Rohingya refugee camps in southern Bangladesh. The content of the DTN was directly relevant to my work in Bangladesh (for instance preparing for a potential cholera outbreak in the camps) and I often referenced much of the materials while overseas. It gave me confidence working in a humanitarian emergency response having tools, resources, and background context which I gained from the DTN. The quality and relevance of the modules as well as the passionate faculty of the DTN motivated me to return the following year for my MSc of International Public Health and dig deeper into some of the topics we explored. I would absolutely recommend the DTN for any nurse that is interested in global health and working in low income settings; it is the best decision I've made towards my career goals."*

— Julia Petras (US nurse)

*"Thank you for a wonderful 3 weeks and for reminding me of all the reasons I came into nursing."*

### Discover more about this programme



**T:** +44 (0) 151 702 9590  
**E:** mylstm@lstmed.ac.uk  
**W:** lstmed.ac.uk/study

# Diploma in Travel Health

(DipTH — Online Course)

### Programme Outline

The programme can be started at different points throughout the year, with the opportunity to sit for the final written assessment and final MCQ exam in either May or September each year.

The Diploma in Travel Health (DipTH) is awarded by the Liverpool School of Tropical Medicine (LSTM) as a Professional Diploma aimed at equipping both new and experienced practitioners in the development of their knowledge, skills and competencies in travel health. The programme provides a platform for confident practice, through interactive on-line learning, an opportunity for reflection, and continuing professional development with subject specialists and peers. The course is open to registered doctors, nurses, pharmacists and travel & expedition health professionals who wish to further develop their travel risk assessment and problem-solving skills in clinical practice.

The programme has been jointly developed by the LSTM and the National Travel Health Network and Centre (NaTHNaC) and is delivered through a series of four on-line modules, each with a corresponding summative assessment, culminating in a final on-line MCQ exam and written assessment.

### The four modules are:

- Travel Vaccination Principles and Practice (TVPP)
- Malaria Prevention in Travel Health (MPTH)
- Governance and Safety in Travel Health (G&STH)
- Hazards in Travel Health (HITH)

### Entry Requirements

- Qualified health care professional; including: General Nurse, or Pharmacist, or Doctor, or travel/expedition medicine Medic. For those candidates where there is a requirement to register as a qualified health care professional in their country of practice, then the candidate must also be able to provide proof of registration.
- Recognition of prior learning: Students who have already successfully completed one/two of the existing modules within the last two years, and who wish to go on to complete the diploma, will be able to submit their assignment for the completed module(s) retrospectively (at the next available assessment date) and go on to complete the remaining modules and submit for the diploma.
- Work Experience - Students should have some previous experience of giving vaccinations/immunisations and ideally will have completed the national minimum standards for immunisation training for the country in which they are practising or will be undertaking this during their course of study.

### 3 Good Reasons to Study



You will develop your theoretical and practical knowledge in travel health by completing four on-line modules using a variety of interactive online educational tools.



This course has been jointly developed by LSTM in conjunction with the National Travel Health Network and Centre (NaTHNaC) and is delivered by experienced clinical professionals from the two organisations.



Learn together through interactive, on-line study with travel health professionals from across the globe.

### Learning Outcomes

- To enable practitioners to develop their knowledge and skills in evidence-based travel risk assessment.
- To provide an opportunity for continuing professional development through interactive learning with subject specialists and peers.
- To develop independent and reflective approaches to study that will enable graduates to continue to learn in the future.

### Career Opportunities

The programme is designed to enhance participants' knowledge base, experience and competencies in the field of travel health to increase employment options through the travel health specialism.

### Discover more about this programme



**T:** +44 (0) 151 702 9590  
**E:** mylstm@lstmed.ac.uk  
**W:** lstmed.ac.uk/study







# CLINICAL SHORT COURSES





# Travel Vaccinations: Principles and Practice

(📅 4 weeks — Online Course)



This programme is part of the Diploma in Travel Health (p51)

## Course Outline

Travel health medicine is a fast growing and fast moving area of clinical practice. All health professionals providing travel health advice need to be familiar with current travel health issues and be able to deliver correct advice using reliable information resources tailored to the individual needs of each traveller. More people with pre-existing illnesses or other special needs are travelling, therefore delivering advice is becoming more complex.

This online course aims to equip new and experienced practitioners in the development of their vaccination knowledge and skills within a travel health setting. It will provide a platform of confident practice, reflection and continuing professional development (CPD) through interactive learning with subject specialists and peers.

## What will we cover:

- Vaccine preventable diseases of importance to the travel health practitioner
- Accessing reliable evidence based country specific vaccine information
- The immune system and the interplay with vaccines
- Types of vaccines
- Practical aspects of administering multiple vaccines and vaccine scheduling
- Application of knowledge using travel scenarios for vaccine administration
- Factors that affect vaccine delivery including cold chain and traveller specific issues such as existing health problems.

## Learning Outcomes

- Explain the basic principles of the immune response to live and non-live vaccines.
- Describe the key features of the vaccine preventable diseases studied.
- List the vaccines relevant to your travellers in your practice setting and be able to summarise the schedules and efficacy of these vaccines.
- Demonstrate the application of your learning in travel health consultations.

## Career Opportunities

This course is suitable for anyone who works in the fields of travel health, nursing or travel medicine. GPs, practice nurses, travel health advisors, pharmacists, specialist infectious disease doctors in training and other related disciplines would find this course extremely useful.

## 3 Good Reasons to Study



Delivered by experienced clinical professionals from the Well Travelled Clinics at the Liverpool School of Tropical Medicine and Alder Hey Children's NHS Foundation Trust who have a wide experience of advising global travellers and teaching health professionals about travel health.



You will develop your theoretical and practical knowledge and skills in advising travellers about travel vaccinations using a variety of interactive online education tools to facilitate learning with other health professionals.



This interactive online learning with subject specialists and other students, enables flexible study to suit your needs including practical case studies from travel health consultations and discussion forums.

*"I really enjoyed the online lectures and being able to study at my own pace was great, this meant I could listen to them a couple of times if I didn't get all the info I needed the first time. The info given was relevant and up to date, I really enjoyed the complex traveller section. I wouldn't hesitate to recommend this course."*

— **Beverley Gratwohl**  
Nurse Practitioner in the UK

## Discover more about this programme



**T:** +44 (0) 151 702 9590  
**E:** mylstm@lstmed.ac.uk  
**W:** lstmed.ac.uk/study

# Malaria Prevention in Travel Health

(📅 3 weeks — Online Course)



This programme is part of the Diploma in Travel Health (p51)

## Course Outline

Travel health medicine is a fast growing and fast moving area of clinical practice. All health professionals providing travel health advice need to be familiar with current travel health issues and be able to deliver correct advice using reliable information resources tailored to the individual needs of each traveller.

More people with pre-existing illnesses or other special needs are travelling, therefore delivering advice is becoming more complex. With the new guidance from the Advisory Committee on Malaria Prevention (ACMP) just released in October 2017, this is an excellent time to learn based on the new guidelines, as there are some significant changes this year. This course will provide a platform of confident practice, reflection and continuing professional development (CPD) through interactive learning with subject specialists and peers. The course features an introductory lecture by Professor David Laloo, chair of the ACMP on the current global picture of malaria. The main aim of this course is to develop confident practice in malaria prevention, and provide an opportunity for reflection and continuing professional development through interactive learning with subject specialists and peers.

## What will we cover:

- Introduction and global impact of malaria
- Malaria life cycle, chemoprophylaxis and the malaria specific travel risk assessment
- Bite prevention
- Advising travellers with special risks on malaria chemoprophylaxis
- Carrying out a malaria risk assessment during a travel consultation

## Learning Outcomes

- Explain basic principles of malaria transmission and global impact of the disease.
- Describe the key features of malaria prevention in travellers: chemoprophylaxis and bite prevention.
- Demonstrate application of learning in travel health consultations.

## Career Opportunities

This course is suitable for anyone who works in the fields of travel health, nursing or travel medicine. GPs, practice nurses, travel health advisors, pharmacists, specialist infectious disease doctors in training and other related disciplines would find this course extremely useful. Open to all health related disciplines.

## 3 Good Reasons to Study



Delivered by experienced clinical professionals from Well Travelled Clinics at the Liverpool School of Tropical Medicine. This course gives you the opportunity to learn from those with up to date knowledge and practical experience.



Interactive on-line learning enables flexible study through participatory group work with other students, on-line lectures and discussion forums.



You will develop theoretical and practical knowledge and skills in advising travellers about malaria prevention by working through practical patient case studies.



*"This is an exciting time to learn more about malaria prevention as the Public Health England guidelines have some significant changes this year in response to changing risks for UK travellers. This course provides an opportunity to learn about current recommended practice in malaria prevention and undertake continuing professional development (CPD) through interactive learning with subject specialists and peers, as well as providing an overview on the current global picture of malaria"*

— **Professor David Laloo**

## Discover more about this programme



**T:** +44 (0) 151 702 9590  
**E:** mylstm@lstmed.ac.uk  
**W:** lstmed.ac.uk/study



# Governance and Safety in Travel Health

(📅 4 weeks — Online Course)



This programme is part of the Diploma in Travel Health (p51)

## Course Outline

The course is designed to equip new and experienced practitioners in the development of their knowledge and skills in relation to the legal and safeguarding issues of travel health. It will provide a platform for confident practice, reflection and continuing professional development through interactive learning with subject specialists and peers.

## What will we cover:

- Introductory Week
- Legal and safeguarding issues in travel health
- Medicines management
- Travel Health consultation and risk management

## Learning Outcomes

- To equip new and experienced practitioners in the development of their knowledge and skills in relation to the legal issues and safeguarding in travel health.
- To provide a platform for confident practice, reflection and continuing professional development through interactive learning with subject specialists and peers.

## Career Opportunities

This course is suitable for anyone who works in the fields of travel health, nursing or travel medicine. GPs, practice nurses, travel health advisors, pharmacists, specialist infectious disease doctors in training and other related disciplines would find this course extremely useful.

## Discover more about this programme



T: +44 (0) 151 702 9590  
E: mylstm@lstmed.ac.uk  
W: lstmed.ac.uk/study

## 3 Good Reasons to Study



Delivered by experienced clinical professionals from the Well Travelled Clinic at LSTM and NaTHNaC who both have wide experience of advising global travellers and teaching health professionals.



You will develop theoretical and practical knowledge and skills in governance and safety in travel health using a variety of interactive online tools to facilitate learning with other health professionals.



This interactive online learning with subject specialists and other students, enables flexible study to suit your needs. The module includes scenario based learning and a range of online group activities.



## 3 Good Reasons to Study



Delivered by experienced clinical professionals from the Well Travelled Clinic at LSTM and NaTHNaC who both have wide experience of advising global travellers and teaching health professionals.



You will develop theoretical and practical knowledge and skills in relation to the discussion of non-vaccine preventable diseases during your travel health consultations.



This interactive online learning with subject specialists and other students, enables flexible study to suit your needs. The module includes scenario based learning and a range of online group activities.



This programme is part of the Diploma in Travel Health (p51)

## Course Outline

To equip new and experienced practitioners in the development of their knowledge and skills related to non-vaccine preventable hazards in a travel health setting. To provide a platform for confident practice, reflection and continuing professional development through interactive learning with subject specialists and peers.

## What will we cover:

- Introductory week
- Vector borne disease, schistosomiasis, sexual health, long haul flights and sun care
- Travellers' diarrhoea, mountains and altitude and the returned traveller

## Learning Outcomes

The aim of this course is to explore non-vaccine preventable health hazards related to travel (excluding malaria) and how these can be prevented / managed when discussed in the travel consultation providing an opportunity for reflection and continuing professional development through interactive learning with subject specialists and peers.

## Career Opportunities

This course is suitable for anyone who works in the fields of travel health, nursing or travel medicine. GPs, practice nurses, travel health advisors, pharmacists, specialist infectious disease doctors in training and other related disciplines would find this course extremely useful. Open to all health related disciplines.

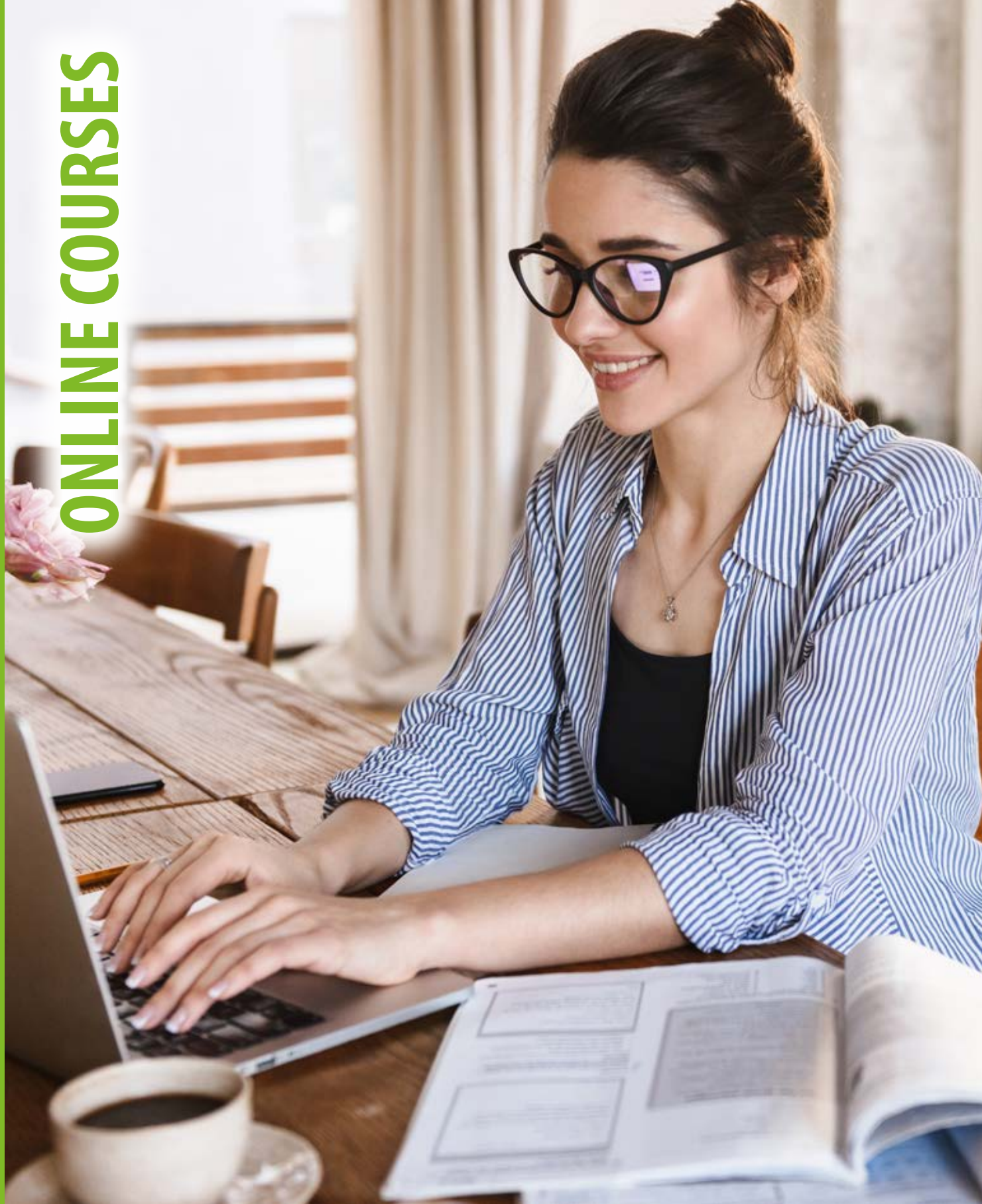
This course is only available as a stand-alone course if you have already completed the online Travel Vaccinations: Principles & Practice course first.

## Discover more about this programme



T: +44 (0) 151 702 9590  
E: mylstm@lstmed.ac.uk  
W: lstmed.ac.uk/study





## Global Health

(12 weeks, online part-time)

### Programme Outline

This module introduces you to knowledge in global health and the determinants of health operating at local and global levels, health inequalities as well as key issues and strategies for protecting and promoting the health of populations in various global settings. You will develop a keen understanding of key global health issues including health determinants, the global burden of disease, health inequalities, strengthening of health systems, global health policies and politics as well as the various strategies used to promote and protect health. You will also develop skills in critical thinking, analysis, collaboration, communication and working with evidence to provide innovative solutions that can help improve health systems. The programme will use a range of learning approaches including the virtual classroom, flipped and peer learning, recorded lectures and threaded discussion boards. Your learning will be supported by a range of online teaching methods that include directed and self-directed learning, group work, case studies and threaded discussion boards. These tools will also be used to provide you with continuous formative feedback. Importantly, you will benefit from access to staff involved in LSTM's global health research programmes (eg drug resistance, gender and health, neglected tropical diseases, climate change, lung health and TB).

### Topics will include:

Definition of global health; review of Michael Marmot's work and the social determinants of health including health inequalities. Global burden of disease with reference to the changing epidemiology and relative importance of different communicable and non-communicable diseases. Strengthening of health systems; global governance and impact of globalisation; health promotion models, theories, principles and practice; health protection principles and application to practice, including environmental hazards and managing risk in practice. Roles and responsibilities of key global agencies and stakeholders collaborating in health promotion and protection; policy analysis.

### Programme Aims:

- Critically discuss the multiple determinants of health and evaluate strategies for improvement and strengthening health systems.
- Critically apply health protection principles in designing and evidence-based health protection strategy response.
- Demonstrate critical knowledge and an awareness of key stakeholders' roles and responsibilities, at a local, national and global levels
- Effectively communicate health protection strategies to various audiences and stakeholders

### 3 Good Reasons to Study



This is a flexible online programme that enables you to stay at 'home' whilst being an (international) student learning with other students from different parts of the world in a high-quality research-led academic environment.



You will gain knowledge in global health inequalities and the determinants of health operating at local and global levels.



You will develop practical skills and strategies for protecting and promoting the health of populations in various global settings.

### Discover more about this programme



**T:** +44 (0) 151 702 9590  
**E:** [mylstm@lstmed.ac.uk](mailto:mylstm@lstmed.ac.uk)  
**W:** [lstmed.ac.uk/study](http://lstmed.ac.uk/study)



# Research Methods

(12 weeks,online part-time)

## 3 Good Reasons to Study



This is a flexible online module which promotes a critical understanding of research paradigms and methodologies, which is necessary for conducting rigorous research and making sound evidence-based decisions - the cornerstone for success in your further learning at Master or Doctoral levels, if you wish to continue, and professional life.



The module draws on the long tradition of excellence in global health research in LSTM. You will learn from experienced tutors and researchers with a strong reputation for research quality and impact around the world and will explore contemporary issues in health research.



The module is real-world oriented and is relevant to practising professionals in all health and social disciplines, whether you are a medic, paramedic, nurse, occupational therapist, social care worker, dentist, psychologist, pharmacist, etc..

## Programme Outline

The module provides you with knowledge, intellectual and practical skills to undertake research, using appropriate quantitative and qualitative methodologies to address global health issues and assess the quality of existing evidence to inform the development of health interventions in different settings. In this module you will cover key aspects of qualitative and quantitative research methodologies. This includes a critical discussion of the different theoretical basis underpinning quantitative and qualitative approaches, study designs, methods, ethical issues, data management, analysis and interpretation. The module will use a range of learning approaches including the virtual classroom, flipped and peer learning, problem-based and experiential group work, recorded lectures, case studies, research papers and threaded discussion boards. The use of multiple-choice questions and practical exercises will also be used throughout the course to provide you with continuous formative feedback in basic statistics and key principles of qualitative research. Your learning is supported by a range of interactive online teaching methods and self-directed learning opportunities, group work, case studies and threaded discussion boards. You will benefit from the global health research and teaching expertise within LSTM.

## Topics will include:

This module covers the essential qualitative and epidemiological concepts and ethics, required to enable you to understand and synthesise evidence from academic papers and how to apply this knowledge to improve your practice and that of your organisation. Concepts associated with risk that used to inform change in practice and communicate research findings such as incidence, prevalence, relative risk and odds ratios will be explored. Basic epidemiological concepts such as use of appropriate indicators and rapid health needs assessment will be studied. You will be introduced to basic statistical techniques to support the synthesis and analysis of data. Positionality and qualitative study design will be considered. In this module, you will also explore the concept of evidence and its association with the research process as applied to the global health sector. Different research paradigms will be discussed, including how each may be applied in a global health context.

## Core content of this module will include:

- Epistemological issues in qualitative and quantitative research
- Introduction to qualitative research and its place as a source of evidence to inform practice.
- Review of how to analyse and synthesise findings from qualitative and quantitative research to help inform practice.

- Critical appraisal of evidence from research studies
- Principles of epidemiology and study design – including descriptive studies, cohort, case control, randomised controlled trials and systematic reviews

Multiple forms of data collection and analysis (types of data; representation of data; summary measurement for continuous data; normal distribution; mean; standard deviation; percentiles; p values; confidence intervals; calculation and communication of risk - odds ratios, relative risk; hypothesis testing to include basic parametric and non- parametric tests; bias and confounding; sampling; data analysis.)

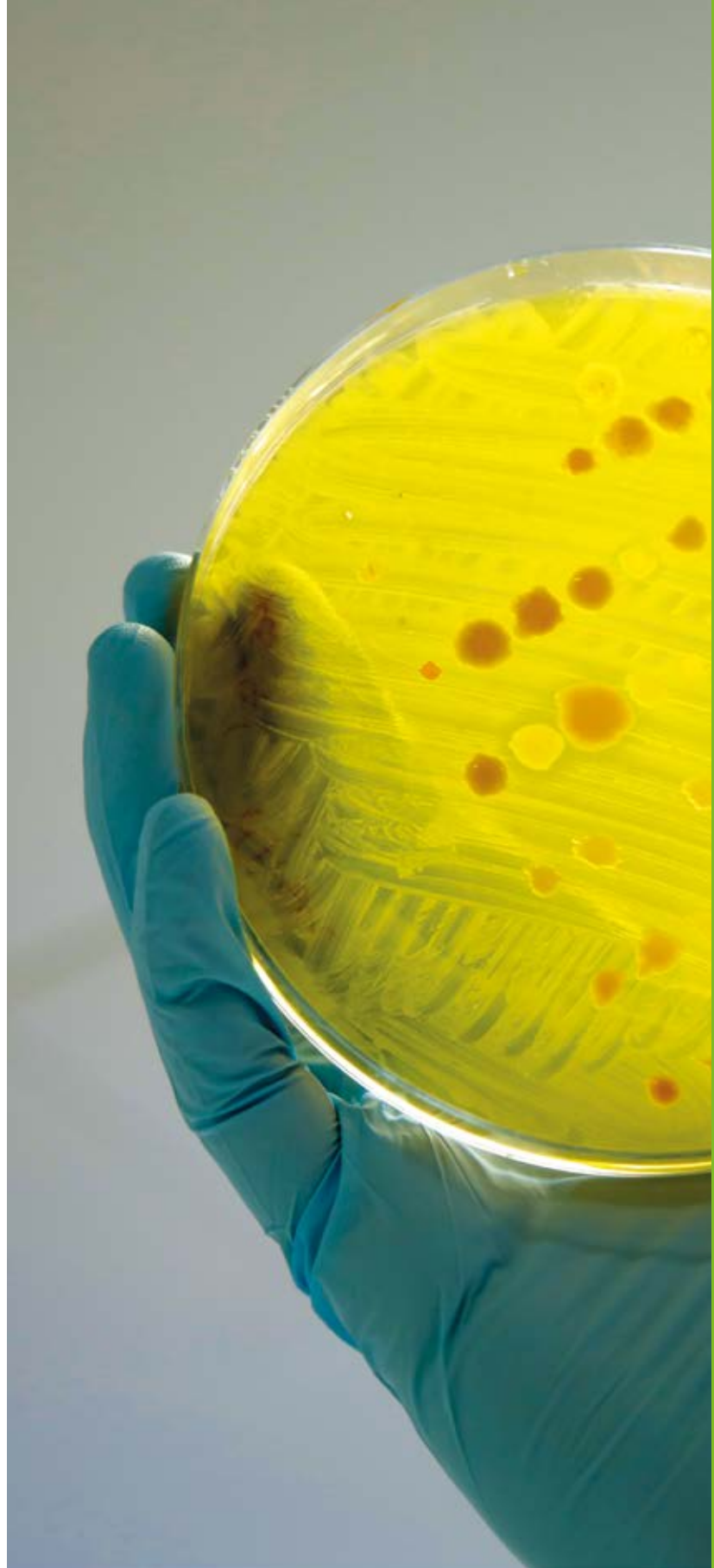
## Programme Aims:

- Critically apply philosophical and epistemological assumptions in quantitative and qualitative research design
- Critically analyse qualitative and quantitative data
- Critically appraise research evidence informed by qualitative and quantitative approaches
- Critically apply ethical principles and demonstrate an awareness of positionality in the development of a research proposal in a global health context

## Discover more about this programme



T: +44 (0) 151 702 9590  
E: mylstm@lstmed.ac.uk  
W: lstmed.ac.uk/study





# Leadership in Health Systems Management

(12 weeks,online part-time)

### 3 Good Reasons to Study



This is a flexible online programme that enables you to stay at 'home' whilst being an (international) student learning with other students from different parts of the world in a high-quality research-led academic environment.



This course will provide you with core theoretical knowledge and important skills for effective leadership in various global health settings.



You will appraise different leadership theories and styles and how they influence outcomes in various health systems.

### Programme Outline

The module will provide you with core theoretical knowledge and important skills for effective leadership in various global health settings. You will be introduced to various key concepts in leadership including, governance, health systems, systems thinking, quality improvement, service development and efficiency measurement. Different leadership theories will be critically discussed, with case studies presented to facilitate group discussions on the practical application of concepts to various scenarios. You will also gain knowledge on how leadership influences the planning, functioning and structuring of local and global health systems. The module is taught using student-centred approaches that include virtual classrooms, online group exercises, chat rooms, blogs, case studies, self-directed and directed reading and recorded presentations from experts in global health systems leadership. The online exercises will provide you with continuous formative feedback. You will keep a reflective diary that documents your learning throughout the module. Your reflections in the diary will contribute towards assessed reflective summary.

### Topics will include:

- |  |   |
|--|---|
| What is leadership?  | Health economics and measuring 'effectiveness'; |
| Leadership theory and styles, including which style to use to get the most benefit in a given situation; | Quality improvement;                            |
| what is a health system?   | Measuring outcomes;                             |
| Governance;  | Systems thinking;                               |
| Universal health coverage;   | Change management;                              |
| Human resources;   | Diplomacy;                                      |
| Management;  | Politics;                                       |
| Financing;   | Policy analysis                                 |

### Programme Aims:

- Critically appraise different leadership theories and styles and how they influence outcomes in various health systems.
- Communicate effectively with the public
- Critically engage with evidence in developing strategies for change in health systems and services that will improve wellbeing
- Critically reflect on their role and that of others in global collaborative work for health.

### Discover more about this programme



**T:** +44 (0) 151 702 9590  
**E:** [mylstm@lstmed.ac.uk](mailto:mylstm@lstmed.ac.uk)  
**W:** [lstmed.ac.uk/study](http://lstmed.ac.uk/study)

# Epidemiology & Statistics

(12 weeks,online part-time)

### Programme Outline

The module provides you with further knowledge and practical skills in epidemiology and statistics. It will allow you to address global health issues by analysing and interpreting epidemiological data and critically appraising the quality of evidence from epidemiological studies.

This module equips you with the knowledge and more advanced practical skills in quantitative approaches that are important for the detailed exploration of global health issues. You will have the opportunity to work with epidemiological data sets, plan a strategy and conduct more advanced statistical analyses of the data using appropriate statistical software. You will also learn how to interpret and present the results. Teaching sessions typically comprise pre-recorded presentations and exercises. You will experience a range of learning approaches including the virtual and flipped classroom, problem-based group work, recorded lectures, case studies, research papers and threaded discussion boards. You will benefit from the global health research and teaching expertise within LSTM.

### Topics will include:

Introduction to the module and scientific methods in epidemiology and statistics; Ethics; Descriptive statistics and secondary analysis of routine data; Data computation and analysis; Epidemiology and Statistics to inform global health policy; Critical appraisal of epidemiology and statistics research; Monitoring and evaluation; Working with large data sets; Policy analysis and interpretation; Systematic review skills and interpretation and application of evidence to health policy and practice.

### Programme Aims:

- Apply epidemiological and statistical techniques to analyse and interpret data.
- Design an epidemiological study to explore a health issue using appropriate quantitative methods.
- Critically appraise and interpret epidemiological and statistical data reported in published studies and draw appropriate inferences.

### 3 Good Reasons to Study



This is a flexible online programme that enables you to stay at 'home' whilst being an (international) student learning with other students from different parts of the world in a high-quality research-led academic environment.



You will address global health issues by analysing and interpreting epidemiological data and critically appraising the quality of evidence from studies.



You will design an epidemiological study to explore a health issue using appropriate quantitative methods.

### Discover more about this programme



**T:** +44 (0) 151 702 9590  
**E:** [mylstm@lstmed.ac.uk](mailto:mylstm@lstmed.ac.uk)  
**W:** [lstmed.ac.uk/study](http://lstmed.ac.uk/study)



# Qualitative Research in Global Health

(12 weeks, online part-time)

## 3 Good Reasons to Study



This is a flexible online programme that enables you to stay at 'home' whilst being an (international) student learning with other students from different parts of the world in a high-quality research-led academic environment.



You will develop your 'deeper' understanding of key concepts in qualitative research from world class researchers at LSTM.



You will undertake research using an appropriate qualitative methodology.

## Programme Outline

The module will develop your 'deeper' understanding of key concepts in qualitative research, so you can critically appraise qualitative research and have the skills to conduct and commission qualitative research in various health contexts. The module (re)introduces you to the theoretical and practical aspects of qualitative approaches in various global health topics. You will learn the practical aspects of qualitative research, including theoretical approaches, selection of research topic, methods (interviews, ethnography, observations etc.), ethics, data collection, transcribing, data analysis, presentation and communication of results to diverse audiences. You will critically discuss, with examples the contextual and contested nature of research ethics and the importance of being a reflexive practitioner. Topics such as critical review, quality, rigour and trustworthiness will be covered. The module will be taught using student-centred, problem-solving online approaches, including virtual classrooms, recorded lectures, discussion boards, videos, and peer assessments. You will also have the experience of learning from world class qualitative research conducted by LSTM academics.

## Topics will include:

Qualitative research and epistemological 'roots';	Interviews (individual, groups);
Culture;	Ethnography;
Positionality;	Data analysis;
Reflexivity;	Transcribing;
Ethics;	Critical appraisal of qualitative research;
Sampling strategies;	Use of technologies in qualitative research

## Programme Aims:

- Undertake research using an appropriate qualitative methodology, including the critical analysis and interpretation of qualitative data
- Critically review ethical principles and issues in qualitative research
- Critically appraise qualitative research evidence
- Critically appraise qualitative research evidence

## Discover more about this programme



T: +44 (0) 151 702 9590  
E: mylstm@lstmed.ac.uk  
W: lstmed.ac.uk/study

# Working with Diverse Communities

(12 weeks, online part-time)

## Programme Outline

The module provides an overview of social science perspectives on the relationships and interactions between social determinants of health at a global level and the 'local' community experiences of health and illness and the implications for policy and practice.

The interaction between the local and the global context of health is complex due to diverse socio-economic, cultural and political contexts. This module will give you different perspectives on the social determinants of health at the global and 'local', community levels within the context of the 'global' language of the right to health. The module will include exploration of how local contexts influence individual experiences of health and illness and the implications of this for global health practice. You will develop an understanding of 'culture' in health and the application of equality and diversity frameworks in a wide range of global health settings. The module will use a range of learning approaches including the virtual and physical classroom, flipped and peer learning, problem-based and experiential group work recorded lectures, case studies, research papers and threaded discussion boards. These interactive tools, including research papers, case studies and videos will be used throughout the course to provide you with continuous formative feedback on the application of social science concepts and human rights in understanding global health issues. You will benefit from the global health research and teaching expertise within LSTM. Your learning is supported by a range of online teaching methods that include directed and self-redirected learning, group work, case studies and threaded discussion boards.

## Topics will include:

You will also be introduced to the concept of 'community' and its importance in global health;	Human rights and global health;
Concepts such as diversity, gender, stigma, culture, globalisation, transnationalism will be (re) introduced.	Rights based approaches vs economic based approaches.
Why are these concepts important for global health?	Human rights violations; cultural rights; children's rights;
Community health, medical knowledge systems – biomedicine, indigenous knowledge, integration of knowledge systems;	Migrant health; push pull factors; humanitarian work;
	Evidence-based strategies;
	Cultural competency.

## Programme Aims:

- Critically appraise the influence of 'contexts' in understanding health
- Critically engage with social science perspectives in reviewing global health policies and issues
- Critically review rights-based approaches in global health
- Critically review professional and ethical behaviour in health care settings

## 3 Good Reasons to Study



This is a flexible online programme that enables you to stay at 'home' whilst being an (international) student learning with other students from different parts of the world in a high-quality research-led academic environment.



You will gain social science perspectives on global health inequalities and 'local' experiences of health and illness



You will develop a critical understanding of 'culture' in health and the application of equity and diversity frameworks

## Discover more about this programme



T: +44 (0) 151 702 9590  
E: mylstm@lstmed.ac.uk  
W: lstmed.ac.uk/study



# Climate Change & Health

(12 weeks, online part-time)

## 3 Good Reasons to Study



This is a flexible online programme that enables you to stay at 'home' whilst being an (international) student learning with other students from different parts of the world in a high-quality research-led academic environment.



This course provides you with knowledge and critical understanding of the effects of global climate change on human health and the impact of these changes on livelihoods



You will explore the economic, political, social and environmental determinants of vulnerability to the effects of climate change and will be encouraged to examine critically, the key strategies of adaptation and mitigation.

## Discover more about this programme



**T:** +44 (0) 151 702 9590  
**E:** [mylstm@lstm.ac.uk](mailto:mylstm@lstm.ac.uk)  
**W:** [lstm.ac.uk/study](http://lstm.ac.uk/study)

## Programme Outline

This module aims to provide you with knowledge and critical understanding of the effects of global climate change on human health and the impact of these changes on livelihoods. You will also explore options for mitigation and adaptation. Climate change is one of the greatest challenges facing the World in the 21st century and this module will look at its wider impact on lives and livelihoods across all continents. You will explore the economic, political, social and environmental determinants of vulnerability to the effects of climate change and will be encouraged to examine critically, the key strategies of adaptation and mitigation. Taking a student-centred and problem-solving approach to facilitate deep learning, core information will be presented through several online platforms including recorded lectures, threaded discussion boards, chat rooms and this will be expanded through case studies, group work and online seminars and group discussions. You will benefit from a learning environment that is embedded in LSTM global health research.

The module is assessed by a 2000-word critical essay, a group presentation and an individual reflective essay. You will be able to write the main critical essay on whatever aspect of the module interests you most, following consultation with, and approval from the module leader. The topic may focus directly on health issues but may also revolve around other areas of concern related to climate change that have an indirect link to health. You will keep a reflective diary that

## Topics will include:

Introduction to climate change;  
climate change and human health;  
the one health agenda;  
managing environmental hazards;  
global guidelines and legal frameworks such as the WHO's IHR commitment for delivery - the recent landmark UN agreements of the Sendai Framework for Disaster Risk Reduction,  
Sustainable Development Goals (SDGs),  
COP21's Paris Climate Conference,  
World Humanitarian Summit and Habitat III;  
collaboration and team working;

## Programme Aims:

- Identify and critically analyse current and potential threats to human lives and livelihoods due to global climate change.
- Critically discuss the complex social, political, economic and environmental determinants of vulnerability to the effects of global climate change.
- Critically discuss how global climate change is likely to affect the nature, frequency and magnitude of humanitarian emergencies.
- Critically appraise global frameworks and adaptation strategies to promote health and mitigate against environmental hazards and climate change







Find out more  
about Postgraduate  
Research Degrees  
[lstmed.ac.uk](http://lstmed.ac.uk)

# POSTGRADUATE RESEARCH DEGREES (PGR)

**LSTM has been at the forefront of research into infectious, debilitating and disabling diseases worldwide since 1898. We were the first institution in the world dedicated to research and training in the field of tropical medicine and our aim is to improve the health of the world's poorest people by combating diseases such as TB, HIV/AIDS, malaria, dengue, and lymphatic filariasis. Our worldwide reputation and the calibre of our work means that our research portfolio now exceeds £500 million.**

Our research degrees provide outstanding, highly motivated individuals with the chance to make a significant contribution to their chosen area of research. Our students have the opportunity to work with a wide range of internationally renowned experts and leading research groups.

LSTM offers the following postgraduate research degrees:

1. PhD studies are undertaken over a period of between two and four years (full-time) or four and six years (part-time).
2. MPhil studies are undertaken over a period of between one and two years (full-time) or two and four years (part-time).
3. MD studies are undertaken over a period of between two and six years (part-time only).

We supervise students in the following research areas:

- Vector Biology
- Tropical Disease Biology
- International Public Health
- Clinical Sciences
- Malaria and other Vector-Borne Diseases
- Neglected Tropical Diseases (NTDs)
- Snakebite and Venom Research
- Maternal, Newborn and Child Health

PhD students are able to choose from the following award titles: Tropical Medicine, Tropical Disease Biology, Vector Biology, Clinical Sciences, Global Health.

We offer opportunities to study full-time, part-time, in Liverpool or based 'off-site' – giving you the flexibility to integrate your research with your existing career or work in the field. Over half of our postgraduate research students are based 'off-site', supported by a network of supervisors based locally as well as in Liverpool.

**Applications are accepted at any time of the year.** Students are able to register and commence their studies on 1st February, 1st August and 1st October of each academic year.

## LSTM is committed to providing:

- A dynamic, stimulating research environment in which students are fully integrated members of the LSTM research community.
- An experienced supervisory team of research active staff.
- Regular supervisory meetings and annual monitoring to ensure you are on track to complete your programme successfully.
- An annual PGR Student Conference, giving you the opportunity to present your research to your fellow students and LSTM staff.
- Wherever possible, support to attend external conferences and network with international researchers in your field.
- Access to laboratory equipment, research sites, library and electronic resources.

## Entrance Requirements

We are looking for students who have obtained (or are expected to obtain) a first class or upper-second class honours degree at undergraduate level and/or a Master's degree in a relevant subject. International qualifications need to be of an equivalent standard, as defined by NARIC.

Students who wish to study for an MD need to have obtained a medical degree which is registerable in the United Kingdom, i.e. obtained from an approved university.

Please visit our website for details of our English language requirements.

## Career Opportunities

Our staff and alumni have been part of the Ebola response in West Africa; were treating patients after the earthquake in Haiti; have built roads where there were none; have negotiated secure aid during civil war and unrest; and have advised the UK government on responding to tropical and infectious diseases. From medics and nurses to water and sanitation technical experts, from managing TB programmes to creating new vaccines, from measuring parasites to finding new molecules, LSTM staff and alumni are making a real difference in the world. ▶

## PhD, MPhil, MD

### 3 good reasons to study

1. Work with internationally renowned, leading experts and make a significant contribution towards your area of research.

2. State-of-the-art laboratory facilities and opportunity to conduct fieldwork in countries such as Malawi, Kenya, Uganda, India, Nepal, and Saudi Arabia.

3. A dedicated academic support network and researcher development training programme to help you realise your potential as a researcher and prepare you for a wide range of careers in academia and beyond.

*Our aim is to help you, as a postgraduate research (PGR) student, to thrive in your doctoral programme, meet our challenging academic expectations and progress to the post-doctoral career of your choice. LSTM will support you in this with the full resources of our dedicated team of expert supervisors, professional services staff and postgraduate researcher peers. I encourage you to take advantage of the training and networking opportunities available in our large and diverse School with its global connections. The Unit for Early Career Researchers is the focal point for the training and development of doctoral researchers. We aim to provide you with an attractive Researcher Development Programme to enable you to maximise your potential as a researcher and enhance your future prospects. As part of our community of PGR students, you will make a substantial contribution to LSTM's world-class research. We view our PGR students as essential to the ongoing vitality of our research culture and developing the next generation of research leaders is central to our mission.*

— **Dr Britta Urban,**  
Reader and Director of Postgraduate Research





# MRC CASE/DTP STUDENTSHIPS

**The MRC Industrial Collaborative Awards in Science and Engineering (CASE) and Doctoral Training Partnership (DTP) scheme offers fully-funded PhD studentships. The programme allows extremely bright, enthusiastic individuals with an outstanding track record to develop their research ideas, interests and skills and to generate PhD plans and research findings that are highly impactful.**

The programme is usually offered on a 1+3 basis: a one-year full-time Master of Research (MRes) in Global Health: Translational and Quantitative Skills taught at Lancaster University followed by a 3-year full-time PhD programme at LSTM. In exceptional circumstances, students who can demonstrate that they have previously completed a relevant Master's qualification may request exemption from the MRes year.

## Objectives

The goal of the DTP is:

- To develop future leaders in translational research relevant to Global Health.
- To develop researchers with quantitative and interdisciplinary skills.
- To develop bridge scientists who can translate scientific innovation into beneficial impact on health for the world's most vulnerable people and communities.

## CASE Studentships

Additionally, the purpose of CASE studentships is to:

- Provide students with experience of collaborative research with a non academic partner.
- Strengthen and develop collaboration and partnerships between research organisations and non academic partner organisations.
- Offer outstanding students an experience of at least two distinct research cultures.
- Provide access to a wider than usual range of technology, facilities and expertise.

Applicants who are successful in obtaining a CASE studentship will be expected to engage in a placement with a non-academic partner for a period of between 3 and 18 months.

## Entrance Requirements

We are seeking candidates with exceptional research credentials. Applicants should hold a first class or upper-second class honours degree (or equivalent) in an area relevant to the available research projects, for example, life sciences, medicine, public health, health economics, mathematics, or social sciences. Candidates who do not meet this requirement may apply if they have been awarded a Master's degree (or equivalent) with a distinction.

## How To Apply

A list of the available research opportunities and information on how to apply will be available on our website during the annual recruitment cycle in autumn.

The studentships will be awarded based on academic excellence and performance at interview.

*"For the first year of the MRC DTP I was based in Lancaster to work on the MRes... I became more confident using R to apply a variety of quantitative methods, including geostatistics and mathematical modelling."*

— Remy Hoek Spaans, 2nd Year PhD Student



Find out more about Postgraduate Research Degrees  
[lstmed.ac.uk](http://lstmed.ac.uk)

## Funding & Eligibility

Eligible students will receive a **full award**, equivalent to the Medical Research Council's indicative fee and stipend level, for each year of registration. In 2019/20, the stipend was £15,009 per annum. In addition, students also receive a contribution towards bench fees and access to supplementary funding for additional skills development, training or placement opportunities.

To be eligible for a full award, candidates must be able to demonstrate that they have settled status and have been ordinarily resident in the UK throughout the three-year period prior to the start of the studentship (but not mainly or wholly for the purpose of receiving full-time education).

Students from EU 27 countries are generally eligible for a **fees-only** award. This covers programme fees, a contribution towards bench fees and access to supplementary funding but does not include a stipend.

**Due to MRC funding restrictions, we are unable to consider applications from students who do not meet UK or EU residence requirements. »**



**MRC DTP Student Case Study**

I obtained a BSc in Biomedical Science from the University of Sheffield in 2014.

Following this, whilst studying for a Masters in Immunology from Imperial College London, I undertook a 7-month research project with the Tuberculosis Research Centre, Imperial College London, under the supervision of Dr Robert Parker and Professor Ajit Lalvani. The project required me to use novel research methods to understand mechanisms by which Bacillus Calmette-Guérin (BCG) vaccination provides protection against unrelated infection such as respiratory syncytial virus and pneumonia as well as target disease tuberculosis, for which it is shown to have varying efficacy.

Following a year as a research assistant at the University of Oxford, I started at the Liverpool School of Tropical Medicine and Lancaster University on the MRC DTP in September 2017. The MRes in Global Health with Lancaster University introduced me to new skills such as programming in R and infectious disease modelling. I look forward to completing my PhD at LSTM on development and evaluation of diagnostics for visceral leishmaniasis (VL) in HIV patients in elimination settings, supervised by Dr Emily Adams. My PhD project will involve frequent travel to Bihar, India.

— Sophie Owen, 2nd Year PhD Student



See more student case studies  
[lstmed.ac.uk](http://lstmed.ac.uk)







Liverpool School of Tropical Medicine,  
Pembroke Place,  
Liverpool, L3 5QA, UK

T: +44 (0) 151 702 9590  
F: +44 (0) 151 705 3370  
E: [mylstm@lstmed.ac.uk](mailto:mylstm@lstmed.ac.uk)

[www.lstmed.ac.uk/study](http://www.lstmed.ac.uk/study)

*All information in this prospectus was correct at the time of print. LSTM reserve the right to amend any information therein. Unattributed student comments have all come from anonymous online evaluations of the programme or course on which the quote appears.*

**World  
leading**



**Life  
saving**

